



THE CLEAR
CHOICE
customer sale

SATURDAY, APRIL 25, 2026
1:00 PM EST • MILAN, IN



THE CLEAR CHOICE *customer sale*

SATURDAY, APRIL 25, 2026
1:00 PM EST • MILAN, IN

SALE SCHEDULE

Friday, April 24th

All Day . . . Cattle on display for viewing

Saturday, April 25th

8-12 PM . . Cattle on display for viewing

1:00 PM . . The Clear Choice Customer Sale,
broadcasted on DVAuction

One hour after the sale, the 3rd Annual
Clear Choice Spotlight Show

SALE LOCATION

ClearWater Simmentals Sale Facility
5512E St Rd 350 Milan, IN 47031

*Sale facility is handicap accessible and
concrete parking lot.*

SALE TERMS & CONDITIONS

All animals will be sold in accordance with the suggested guidelines of the American Simmental Association. For updated EPDs, genetic status, plus the current ASA guidelines and conditions go to www.simmental.org. Announcements made sale day and from the auction block take precedence over printed material associated with this sale. Anyone attending this sale attends at his or her own risk. ClearWater Simmentals, DP Sales Management, LLC, or guest consignors will not be responsible for any personal injury while attending this sale.

SALE REGISTRATION & PAYMENT

All buyer numbers will only be issued with a valid ID and payment is due day of sale. DP Sales Management would appreciate timely settlement of receivables within 15 days of date of sale. Cattle will not be transferred until paid in full. DP Sales accepts Visa and Mastercard.

ONLINE BIDDING

DVAuction
Broadcasting Real-Time Auctions

SALE DAY PHONES

Doug Parke 859-421-6100
Drew Hatmaker 423-506-8844
Holli Hatmaker 859-707-5248
Leah Meinders 812-498-2840
Bobby Beshears 765-717-4789

SALE STAFF

Tommy Carper, *Auctioneer* 540-336-2737
Mike Berger, *Sale Staff* 574-850-5605
Rob Chapman, *Sale Staff* 269-832-9632
Evan Eggersman, *Sale Staff* 812-569-2951
Dalton Lundy, *Consultant* 502-727-6898
Tim Schwab, *Consultant* 812-569-8536

CONSIGNOR SALE DAY PHONES

Aaron Barnhill 606-316-5375
Nate Hoeing 765-561-3178
Laura Jackson 859-707-7200
JJ Jackson 859-707-1174
Bret Jackson 859-533-3718
Joe Neal 812-881-9381
Drew Vehslage 812-528-0233
Chris Allen 859-351-4486
Adam Everhart 317-508-1712
Lane Simon 812-212-0705
Steve King 270-384-4722
Jason Bohlander 765-812-1504

TRUCKING

Chance Campbell 859-481-1478
Dick Coleman 765-461-0954
Bret Jackson 859-533-3718

Welcome!

Just a few short weeks ago, the four breeders behind the Clear Choice Bull Sale wrapped up another successful event — highlighted by a strong crowd, active bidding, and an impressive set of open heifers. We're excited to see many of those heifers back in the ring at the Spotlight Show on April 25th.

The Customer Sale is exactly what it's meant to be — a sale built to support you, our customers. Whether you're running a large program or a smaller herd, this event is designed to create opportunity. As you flip through this catalog, you'll find a wide range of offerings including open heifers, bred females, pairs, elite genetic lots, along with semen, embryos, and a few unique consignments.

Our goal remains simple: to help our customers succeed. Your cattle don't have to carry our prefix or genetics to be part of this offering — if you're a customer, we're here to help you market your program and keep moving forward.

The Spotlight Show continues to be one of the most rewarding parts of this event. From the juniors competing for \$3,000 and \$1,500 payouts to the overall experience in the ring, it's an opportunity that recognizes effort, encourages participation, and leaves everyone with something to be proud of.

No matter where you purchase your next show heifer — all females from our three sales are eligible to compete in the Spotlight Show. If you have questions, don't hesitate to reach out. Holli and Drew would be happy to visit with you about the event, and we encourage you to come see it for yourself.

Finally, we want to sincerely thank the breeders represented in the following pages. We value your trust and appreciate the opportunity to help promote your cattle and genetics.

We invite you to join us for this year's sale and Spotlight Show, and we hope you'll consider being part of it again in 2027.

With appreciation,
Jeff & Leah Meinders
Doug Parke, DP Sales Management



ClearWater Simmentals
Jeff & Leah Meinders / Milan, Indiana
Leah Meinders, 812-498-2840
Jeff Meinders, 812-871-1313
www.clearwatersimmentals.com



Consignors

Barnhill Simmentals

Aaron Barnhill, 606-316-5375
Grayson, KY
abarnhill78@yahoo.com

Beshears Simmentals

Bobby & Elizabeth Beshears
765-717-4789
bobbydbeshears@gmail.com
David & Amy Beshears, 765-716-0599
Kenny & Amy Beshears
Winchester, IN

Bohlander Simmentals

Jason Bohlander, 765-812-1504
Connorsville, IN
nbohlander@co.fayette.in.us

Breymier Farms

Jake Breymier, 937-467-1284
Union City, OH

Eggersman Brothers

Jordan Eggersman, 812-216-2056
Seymour, IN

Rebecca & Taylor Ellington

859-619-5209
Mount Sterling, KY

Everhart Farms

Adam Everhart, 317-508-1712
Terre Haute, IN
everhartcattle@yahoo.com

Full Circle Farm

Dr. Josh Winslow, 304-904-1389
Dayton, PA

MH Family Farm

MJ Hartman, 812-363-2957
Sunman, IN

Lucky Penny Cattle Company

Nate & Ashley Hoeing, 765-561-3178
Rushville, IN
nhoeing3178@gmail.com

Ridgeland Cattle Company

Bret & Laura Jackson
859-707-7200 or 859-533-3718
Paris, KY
laura.jackson7200@gmail.com

Erik McKittrick

513-317-2673
Milan, IN

Neal Brothers

Joe Neal, 812-881-9381
Freelandville, IN
nealbrotherscattle@gmail.com

Bill Sloup

402-641-5132
Seward, NE

Sloup Simmentals

Nick Sloup, 402-641-2936
Seward, NE

Springfield Simmentals

Lavon & Floyd Yoder, 330-340-7446 or
330-340-4915
Fresno, OH

Mike & Parker Wicker

765-744-8316
Rushville, IN

Wayward Hill Farm

Dr. Henry Allen, 859-229-0755
Chris Allen, 859-351-4486
callenuky@hotmail.com
Versailles, KY

FALL OPEN HEIFERS



WAYWARD HILL FARM

1

WHF *Andie* 516N

BD. 11/10/25 • ASA#. 4664197 • 1/2 Simmental
Tattoo. 516N • Adj. BW. 60 lbs.

SSF ON POINT 4028
sire **ROSE MC ENCORE 0463**
BURNS ELBA 1454
MR HOC BROKER
dam **WHF ANDIE 365A**
PRS SUMMER W364

| CE | BW | WW | YW | MCE | Milk | MWW | Marb | REA | API |
|-----|-----|------|-------|-----|------|------|-------|------|------|
| 7.3 | 3.5 | 79.3 | 116.6 | 4.3 | 18.8 | 58.3 | -0.07 | 0.53 | 90.5 |

A high-quality Encore daughter backed by the proven Andie 365A cow family. Long-fronted, smooth-shouldered, and bold ribbed with a square hip and sound movement. A November show heifer prospect with the look to compete and the pedigree to back it. A rare combination of phenotype and predictability from one of the most respected cow families in the breed.

WICKER, PARKER



WAYWARD HILL FARM

2

WHF *Delilah* 455N

BD. 10/14/25 • ASA#. 4664196 • Purebred
Tattoo. 455N • Adj. BW. 83 lbs.

EGL FIRESTEEL 103F
sire **WHF/JS/CCS WOODFORD J001**
WHF SUMMER 365C
KCC1 EXCLUSIVE 116E
dam **WHF DELILAH 45J**
WHF DELILAH 45D

| CE | BW | WW | YW | MCE | Milk | MWW | Marb | REA | API |
|------|-----|------|-------|-----|------|------|------|------|-------|
| 11.0 | 1.3 | 86.9 | 120.0 | 4.8 | 17.8 | 61.1 | 0.17 | 0.87 | 131.4 |

A striking, well-balanced Woodford daughter backed by the proven Delilah cow family. A full sibling to a high seller in last year's sale to Cooper Joines, with a pedigree that continues to generate demand. Her dam is a full sister to Entourage, Greater Good, and the 454H donor. An October prospect with the look to compete and the backing to add long-term value.

3

HPW *Breath of Souls* 16N

BD. 9/2/25 • ASA#. 4570778 • Purebred
Tattoo. 16N • Adj. BW. 77 lbs.

LCDR PROGRESSIVE 106G
sire **ES FIVE STAR LIMITLESS LJ39**
ES J39
CLRWTR CLEAR ADVANTAGE H4G
dam **HPW SUPREMACY 26L**
HPW JAQUELINE 51J

| CE | BW | WW | YW | MCE | Milk | MWW | Marb | REA | API |
|------|-----|------|-------|-----|------|------|------|------|-------|
| 11.9 | 0.1 | 86.8 | 132.6 | 7.2 | 27.6 | 70.9 | 0.47 | 0.82 | 150.2 |

Out of the high performing Five Star Limitless sire, coupled with a Clear Advantage dam - you have a productive brood cow in the making. Our Clear Advantage cows are calf raising factories, and we expect nothing less with 16N. Sound and balanced, she is here for the long haul. If you would like to play with her in the show ring, she's halter broke; however, we would recommend a showman with a little more seasoning. She still plays "hard to get", but once she knows you, she loves the attention. A heifer that certainly could raise some high performance offspring!



SPRING OPEN HEIFERS

SPRINGFIELD SIMMENTALS

4

SPSF *Miss Infinity* 28N

BD. 4/17/25 • ASA#. 4514151 • Purebred
Tattoo. 28N • Adj. BW. 85 lbs.

ES/WC INTEGRITY FA117-3

sire **W/C INTEGRITY 7102K**

MISS WERNING 534R

AH2 DARK MOON F823

dam **SPSF MISS INFINITY 24K**

AH2 MS INFINITY H050

| CE | BW | WW | YW | MCE | Milk | MWW | Marb | REA | API |
|-----|-----|------|-------|-----|------|------|------|------|-------|
| 9.1 | 2.8 | 81.7 | 121.2 | 4.3 | 24.8 | 65.6 | 0.11 | 0.97 | 131.6 |

Looking for a heifer to move your program forward? MISS INFINITY is well-made, sound, and functional, with the kind of build and pedigree to produce the money-making kind. Gentle as a kitten and backed by proven cow families, she offers both disposition and performance—be sure to check her out!



Lot 4

5

MS *Serena* N74

HARTMAN, M.J.

BD. 4/9/25 • ASA#. 4660211 • Purebred
Tattoo. N74

W/C DOUBLE DOWN 5014E

sire **WHF/JS/CCS DOUBLE UP G365**

WHF SUMMER 365C

SC PAY THE PRICE C11

dam **CLRWTR SERENA J74A**

HF SERENA

| CE | BW | WW | YW | MCE | Milk | MWW | Marb | REA | API |
|-----|-----|------|-------|-----|------|------|-------|------|-------|
| 6.6 | 2.5 | 81.4 | 112.1 | 4.3 | 18.3 | 58.9 | -0.01 | 0.97 | 104.7 |

We bought this heifer's dam from the Clearwater sale to be my last show heifer. She is an attractive April heifer that is neat and feminine in her design. The Double Up daughters continue to prove themselves as outstanding cows, and the bottom side of her pedigree speaks for itself. If you are looking for one to make show heifers with, look in here. She was broke to tie last fall and is easy going.



Lot 5

6

NB *Redon* 31N

NEAL BROTHERS

BD. 3/21/25 • ASA#. 4658692 • Purebred
Tattoo. 31N • Adj. BW. 67 lbs.

HHS MR 847D

sire **KBHR REVOLUTION H071**

WS MISS SUGAR C4

W/C RELENTLESS 32C

dam **NB RENEE 75G**

NB DREAMBOAT ANNE 5U

| CE | BW | WW | YW | MCE | Milk | MWW | Marb | REA | API |
|-----|-----|------|-------|-----|------|------|------|------|-------|
| 6.7 | 2.7 | 90.2 | 134.0 | 3.5 | 20.9 | 65.9 | 0.28 | 1.05 | 131.2 |

Sells with 2 units of Ruby's Start Up, sexed female semen. Here is an attractive stripe-faced Revolution daughter that is sure to catch your eye. Her dam is a fancy-made Relentless female tracing back to our foundation cow, Dreamboat Anne. This is a top-notch replacement prospect with both style and proven genetics.



Lot 6

SPRING OPEN HEIFERS



Lot 7

7

NEAL BROTHERS

Miss Daisy 06-N

BD. 2/18/25 • ASA#. 4599255 • 3/4 Simmental
Tattoo. 06-N

JSUL SOMETHING ABOUT MARY 8421
sire **HILL GOT TO LOVE 7K**
HILL/TC I LOVE U G7
W/C LOADED UP 1119Y
dam **CHIL LULU 009H**
HILL`S MIA 605D

| CE | BW | WW | YW | MCE | Milk | MWW | Marb | REA | API |
|-----|-----|------|-------|-----|------|------|------|------|------|
| 7.6 | 2.1 | 71.4 | 106.5 | 3.9 | 18.6 | 54.3 | 0.07 | 0.80 | 96.8 |

Sells with 2 units of Ruby's Start Up, sexed female semen. Here's an attractive, stout-made SAM granddaughter backed by a really nice Loaded Up dam. If you're looking for a high-quality replacement, look no further.



Lot 8

8

MH FAMILY FARMS

MHFF *Rosie* N86

BD. 2/16/25 • ASA#. 4660213 • Purebred
Tattoo. N86

HTP/SVF DURACELL T52
sire **THSF LOVER BOY B33**
RP/MP RIGHT TO LOVE 015U
TNT TANKER U263
dam **CLRWTR FAYE L8611**
3C CROCUS 8611F BZ

| CE | BW | WW | YW | MCE | Milk | MWW | Marb | REA | API |
|------|-----|------|-------|-----|------|------|------|------|-------|
| 10.0 | 0.9 | 81.6 | 116.0 | 7.2 | 27.1 | 67.8 | 0.15 | 0.89 | 132.7 |

Lots 8 and 9: The next two heifers are out of a pair of bred heifers we purchased through this sale ring last fall. Both trace back to the strong cow families of the Christensen Ranch program. They are balanced, stout made, and easy keeping females with the kind of look and structure that work in any herd. If you're searching for a heifer to build around or one capable of raising quality females and herd bulls, be sure to give these two a serious look. They were broke to tie last fall and are gentle, easy-going heifers.



Lot 9

9

HARTMAN, M.J.

MS *Blanche* N764

BD. 2/10/25 • ASA#. 4660212 • 3/4 Simmental
Tattoo. N764

WLE COPACETIC E02
sire **ROCKING P PRIVATE STOCK H010**
RP/MP BUILT TO LOVE A021
3C HARMONY 0575H B
dam **CLRWTR BLANCHE L7644**
3C CROCUS 7644E B

| CE | BW | WW | YW | MCE | Milk | MWW | Marb | REA | API |
|------|-----|------|-------|-----|------|------|------|------|-------|
| 11.5 | 1.0 | 85.1 | 133.6 | 5.8 | 16.0 | 58.4 | 0.40 | 0.74 | 137.3 |

THE CLEAR CHOICE
spotlight
Customer Junior Show

April 25, 2026 • Milan, IN

CLEAR CHOICE SALE FACILITY • FOLLOWING THE CLEAR CHOICE CUSTOMER SALE

\$3,000 GRAND CHAMPION • \$1,500 RESERVE CHAMPION

This show is NO FIT and you will be showing off of your trailer. No barn space will be available due to the sale. Ample parking space is available.

Monetary award and sale credit will be awarded to every animal shown.

*Youth ages 8 through 21 as of January 1, 2026 are eligible,
animal must be registered in the junior's name at purchase.*

Females must be purchased from a 2025 or 2026 Clear Choice Sale.

• ENTRIES OPEN SPRING 2026 •

**FOR INFORMATION ON ENTRIES PLEASE CONTACT
HOLLI HATMAKER • 859-707-5248 • HOLLI@DPSALESLLC.COM**

FOR ADDITIONAL INFORMATION CONTACT

ClearWater Simmentals, Jeff & Leah Meinders • Leah. 812-498-2840
DP Sales Management • Doug Parke. 859-421-6100
Beshears Simmentals • Bobby Beshears. 765-717-4789

Lucky Penny Cattle Co. • Nate Hoeing. 765-561-3178
Neal Brothers • Joe Neal. 812-881-9381
Tommy Carper. 540-336-2737



DAKOTA D13 FAMILY



Lot 11



BOWJ Manifest 985M - Sire of Lot 12A



KBHR Monaco - Sire of Lot 13A



DAF Dakota D13 - Donor Dam of Lots 11-13

CLEARWATER SIMMENTALS



CLRWTR *Dakotas Ms Royal* N13A

BD. 1/1/25 • ASA# 4593693 • 1/2 Simmental
Tattoo. N13A • Adj. BW. 87 lbs.

sire **SSF ON POINT 4028**
ROSE MC ENCORE 0463
BURNS ELBA 1454
LLSF PAYS TO BELIEVE ZU194
dam **DAF DAKOTA D13**
KENCO STEEL MAGNOLIA

| CE | BW | WW | YW | MCE | Milk | MWW | Marb | REA | API |
|-----|-----|------|-------|-----|------|------|------|------|------|
| 9.0 | 1.2 | 71.2 | 100.5 | 3.9 | 16.3 | 51.8 | 0.01 | 0.41 | 93.2 |

All'd to GCC Night Owl (ASA# 4284092) on 4/9/26. If you paid attention last fall in our female sale, you couldn't miss the powerful presence of the Dakota D13 daughters as they headlined the event. Seven daughters were offered that day and averaged nearly \$9,000 each, and we feel we're just scratching the surface with this potent cow family. The top daughter, N44E — a full sister to this female — was selected by the Hege family. N13A has the presence to compete at a high level in major shows. Take a minute to study this one—you'll be glad you did.

CLEARWATER SIMMENTALS & BESHEARS SIMMENTALS



DAF *Dakota D13 Embryos*

BD. 3/2/16 • ASA# 3131261 • Purebred
Tattoo. D13 • Adj. BW. 74 lbs.

sire **CNS PAYS TO DREAM T759**
LLSF PAYS TO BELIEVE ZU194
LLSF URABABYDOLL U194
SVF STEEL FORCE S701
dam **KENCO STEEL MAGNOLIA**
SAFN SHES GLAMOROUS

Offered by ClearWater Simmentals

Lot 13A: 3 IVF Unsexed Embryos by KBHR Monaco (ASA# 4387151)

| CE | BW | WW | YW | MCE | Milk | MWW | Marb | REA | API |
|-----|-----|-------|-----|-----|------|-----|------|------|-------|
| 8.7 | 2.6 | 104.3 | 154 | 5.1 | 26 | 78 | 0.72 | 1.04 | 163.2 |

Guaranteeing 1 pregnancy if implanted by a certified embryologist.

Offered by Beshears Simmentals

Lot 13B: 3 RSF Embryos by UDE New Heights 62/87 (ASA# 4464763)

| CE | BW | WW | YW | MCE | Milk | MWW | Marb | REA | API |
|-----|-----|------|-------|-----|------|------|------|------|-------|
| 8.9 | 2.2 | 85.9 | 128.6 | 4.2 | 18.3 | 61.1 | 0.13 | 0.63 | 105.6 |

Guaranteeing 1 pregnancy if implanted by a certified embryologist.

CLEARWATER SIMMENTALS



ET *Pair WITH Heifer Calf*

BD. 1/30/26 • ASA# Pending • Purebred
Tattoo. P13H • Adj. BW. 78 lbs.

4/B DYNAMO
sire **BOWJ MANIFEST 985M**
HCC0 COUNTESS 985F
LLSF PAYS TO BELIEVE ZU194
dam **DAF DAKOTA D13**
KENCO STEEL MAGNOLIA

Projected EPDs

| CE | BW | WW | YW | MCE | Milk | MWW | Marb | REA | API |
|-----|-----|------|-------|-----|------|------|------|------|-------|
| 6.9 | 3.1 | 80.9 | 109.1 | 1.8 | 22 | 62.4 | 0.04 | 0.66 | 104.7 |

Lot 12: Purebred Recip | ASA# 3957684 | BD: 1/15/21 | Tattoo: J38C
WS Proclamation E202 x TJ Ms 38W (Dikemans Sure Bet)

What an opportunity to tie into the Dakota D13 family with much of the guesswork already removed. We decided to dig deep and offer a truly special ET pair. This stylish heifer calf is sired by the high seller at Hartman's last year, BOWJ Manifest, and out of D13. We feel this female has all the right pieces to be something big time. Her recipient dam, J38C, is no slouch either—she's a WS Proclamation daughter out of TJ 38W, the high-valuation donor. J38C also boasts an impressive set of data. We're offering some of our freshest and very best to our customers.

Lots 13A & 13B: Offering two fresh and extremely intriguing matings on this tremendous female that is making a big impact not only in our program but in others across the country. Semen on KBHR Monaco is not available on the open market and averaged nearly \$3,000 per unit this spring. UDE New Heights has taken the Angus breed by storm with the quality of his offspring, and D13 has proven to work exceptionally well with Angus sires—this combination is set up to be a home run. We haven't offered many embryos out of D13, so take advantage of this opportunity.

FALL BRED HEIFERS

NEAL BROTHERS

14

NB *Innovative Cassie* M14

BD. 2/17/24 • ASA#. 4661074 • 5/8 Simmental
Tattoo. M14 • Adj. BW. 64 lbs.

CDI INNOVATOR 325D

sire **NB TUITION INNOVATOR 71G**

RLWF TUITION VELVET Y138

WBF IRON CLAD E053

dam **NB IRON CASSIE K14**

NB CASSIE 14F

| CE | BW | WW | YW | MCE | Milk | MWW | Marb | REA | API |
|-----|-----|------|-------|-----|------|------|------|------|-------|
| 6.5 | 2.3 | 79.2 | 120.8 | 4.0 | 21.8 | 61.3 | 0.32 | 0.67 | 116.0 |

AI'd to Ruby's Start Up 3L105, sexed semen, on 12/31/25. Confirmed safe, no bull exposure. Due 10/10/26. Here's a highly functional replacement female backed by proven genetics that have helped sustain our program for many years. Built with longevity, productivity, and maternal strength in mind, she represents the kind that works in the real world and keeps delivering year after year. A dependable addition that's ready to go to work in any operation.



Lot 14

LUCKY PENNY CATTLE COMPANY

15

NAHF *Ms Sugar* 485M

BD. 10/18/24 • ASA#. 4562558 • Purebred
Tattoo. 485M • Adj. BW. 69 lbs.

ES EPIC EB94

sire **WHF EPIC J114**

WHF YASMINE 114C

W/C EXECUTIVE ORDER 8543B

dam **KDS CINNAMON GIRL 50H**

RRCC ALESSIA 50F

| CE | BW | WW | YW | MCE | Milk | MWW | Marb | REA | API |
|------|------|------|-------|-----|------|------|------|------|-------|
| 17.5 | -1.4 | 72.3 | 110.8 | 8.0 | 22.2 | 58.3 | 0.21 | 0.74 | 142.3 |

AI'd to GCC Night Owl (ASA# 4284092) on 12/9/25. PE Five Star MVP (ASA# 4406801) from 12/1/25 to 1/31/26. Sells with 5 units of Five Star MVP semen. Here's another well-balanced Epic J114 daughter that offers a strong, balanced set of data. AI'd to the Denver Champion Night Owl and backed up by Five Star MVP, she represents a win-win either way. With her combination of pedigree and performance, she's built to add value and consistency to any program.



Lot 15

RIDGELAND CATTLE COMPANY & JJ JACKSON

16

R-CC *Miss Cora*

BD. 10/18/24 • ASA#. 4555042 • Purebred
Tattoo. 214M

EGL FIRESTEEL 103F

sire **WHF/JS/CCS WOODFORD J001**

WHF SUMMER 365C

WS PROCLAMATION E202

dam **CLRWTR CORA H58C**

HF CORA 58C

| CE | BW | WW | YW | MCE | Milk | MWW | Marb | REA | API |
|------|-----|------|-------|-----|------|------|------|------|-------|
| 10.7 | 1.5 | 85.8 | 121.4 | 4.1 | 19.3 | 62.1 | 0.33 | 0.48 | 144.8 |

AI'd to Tehama Tahoe (ASA# 3396482) on 3/11/26. This fancy, star-headed purebred heifer is an absolute standout with an incredibly clean front with length and balance to go along with it. Her balanced EPD profile ensures she is as functionally sound on paper as she is striking. The maternal power here is undeniable, as her dam was an open heifer purchased at the ClearWater Female Sale that has been a consistent producer for JJ ever since. This heifer is already working for her new owner, carrying a pregnancy to the proven Angus sire, Tehama Tahoe. Don't miss this opportunity to add a feminine, high-performing female to your program who is ready to calve next spring!



Lot 16

FALL BRED HEIFERS



Lot 17

17

LUCKY PENNY CATTLE COMPANY

NAHF *Lady Epic* 449M

BD. 9/13/24 • ASA#. 4562545 • 3/4 Simmental
Tattoo. 449M • Adj. BW. 83 lbs.

ES EPIC EB94

sire **WHF EPIC J114**

WHF YASMINE 114C

GXK MR PRETTY BOY 222G

dam **NAHF PRETTY LADY 136J**

NAHF LOVELY LADY 903G

| CE | BW | WW | YW | MCE | Milk | MWW | Marb | REA | API |
|-----|-----|------|-------|-----|------|------|------|------|-------|
| 9.9 | 2.6 | 78.7 | 119.3 | 6.5 | 24.3 | 63.6 | 0.17 | 0.69 | 109.9 |

PE to Five Star MVP (ASA# 4406801) from 12/1/25 to 1/31/26. Sells with 5 units of Five Star MVP semen. Here's a solid 3/4 blood female that should offer added growth and performance. She is bred to Five Star MVP for a fall calf, adding extra value to an already strong package. The first MVP calves are on the ground, and we've been more than pleased with their quality, consistency, and overall look.



Lot 18

18

RIDGELAND CATTLE COMPANY

R-CC *Beautiful* 714M

BD. 9/11/24 • ASA#. 4634375 • Purebred
Tattoo. 714M • Adj. BW. 60 lbs.

WLE COPACETIC E02

sire **ROCKING P PRIVATE STOCK H010**

RP/MP BUILT TO LOVE A021

HTP SVF IN DEW TIME

dam **BRAMLETS BEAUTIFUL Z223**

HPF MS BEAUTIFUL S054

| CE | BW | WW | YW | MCE | Milk | MWW | Marb | REA | API |
|------|-----|------|-------|-----|------|------|------|------|-------|
| 13.3 | 0.9 | 80.2 | 118.3 | 4.7 | 14.9 | 54.8 | 0.11 | 0.55 | 131.3 |

AI'd to WHF Point Proven (ASA# 3780742) on 1/15/26. This purebred heifer is a bid-ribbed, sound-structured standout that perfectly combines eye appeal with true cow-power! She is backed by an elite genetic foundation, going back to the legendary A021 on the top side and the ultra-productive Z223 family on the bottom. Her structural integrity and bold sprung design make her exactly the kind of female that anchors a successful breeding program for years to come. The value here is immediate, as she comes safe in calf to the popular sire, WHF Point Proven! Don't miss your chance to own a high-caliber female that is due to hit the ground running this fall with a big-time return on investment!



Lot 19

19

LUCKY PENNY CATTLE COMPANY

NAHF *Ms Payroll* 438M

BD. 9/9/24 • ASA#. 4562541 • Purebred
Tattoo. 438M • Adj. BW. 84 lbs.

W/C BANKROLL 811D

sire **SJF SMJ PAYROLL**

SJF/TVSC CHARLIE

WS STEPPING STONE B44

dam **NAHF JOSIE GIRL 814F**

NAHF DREAMIN JOSIE 634D

| CE | BW | WW | YW | MCE | Milk | MWW | Marb | REA | API |
|-----|-----|------|-------|-----|------|------|------|------|-------|
| 9.1 | 1.4 | 74.3 | 108.4 | 4.9 | 22.8 | 59.8 | 0.04 | 0.70 | 115.7 |

PE to Five Star MVP (ASA# 4406801) from 12/1/25 to 1/31/26. Sells with 5 units of Five Star MVP semen. Looking for a quality red female to slide into your fall program? This one fits the bill. She offers the kind of balance, functionality, and eye appeal that works in a variety of operations. She is bred to our exciting new herd sire, a son of OMF Journeyman—Five Star MVP—adding even more value and potential to an already strong package.

FALL BRED HEIFERS

RIDGELAND CATTLE COMPANY

20

R-CC *Break Away* 214M

BD. 9/5/24 • ASA# 4638578 • Purebred
Tattoo. 223M • Adj. BW. 72 lbs.

WS ALL-AROUND Z35

sire **OMF EPIC E27**

OMF TIME LESS B100

MR CCF 20-20

dam **MISS CCF BREAK FREE H223**

MISS CCF BREAKING HEARTS

| CE | BW | WW | YW | MCE | Milk | MWW | Marb | REA | API |
|------|-----|------|-------|-----|------|------|------|------|-------|
| 10.8 | 0.9 | 79.5 | 112.9 | 5.7 | 19.1 | 58.8 | 0.06 | 0.91 | 123.2 |

AI'd to Five Star MVP (ASA# 4406801) on 12/6/25. This purebred female is an absolute powerhouse, combining a massive foot and stout bone with a deep-ribbed, maternal design that is built for the long haul! Her pedigree is steeped in elite quality, as her dam comes out of the C & C program in Georgia. She possesses the incredible structural integrity and brood-cow look that makes her a cornerstone addition to any operation. Adding even more value, she comes AI-d to Five Star MVP, the young standout from Lucky Penny Cattle Co. Get ready for a high-quality calf and a front-pasture female that will consistently represent your program with style and substance!



Five Star MVP M60 - Service Sire of Lot 20

21

BFSF *Bells A Ringin* 9M

BD. 6/9/24 • ASA# 4555899 • Purebred
Tattoo. 9M • Adj. BW. 87 lbs.

SC PAY THE PRICE C11

sire **KRB OBSIDIAN H451**

STF ONYX 451W

MR HOC BROKER

dam **JS CHURCH BELL 9E**

JS FLATOUT FLIRTY 46T

| CE | BW | WW | YW | MCE | Milk | MWW | Marb | REA | API |
|-----|-----|------|------|-----|------|------|-------|------|-------|
| 9.9 | 1.6 | 64.4 | 92.2 | 4.2 | 20.8 | 52.9 | -0.03 | 0.83 | 104.2 |

AI'd to ES Five Star Limitless LJ39 (ASA# 4186927) on 11/14/25. PE to FSSR Chief Executive Order (ASA# 3905201) from 12/3/25 to 2/15/26. This heifer combines some of the breed's greatest cow families into a powerful package that will pay dividends for years to come. Sired by Obsidian, she carries Pay the Price and STF Onyx on the top side, and her dam brings in Broker and Flat Out Flirty, a sister to Boots. This is proven genetics at their finest—power, performance, and pedigree all in one package.



Lot 21

22

BOH *Miss Emmy* M65

BD. 3/24/24 • ASA# 4654839 • Purebred
Tattoo. M65 • Adj. BW. 67 lbs.

WS PROCLAMATION E202

sire **CLRWTR PROCLAMATION J5105B**

CLRWTR SHADES OF RED

SVF TRUE JUSTICE D100

dam **BOH MISS EMMY**

BESH MS CM1

| CE | BW | WW | YW | MCE | Milk | MWW | Marb | REA | API |
|-----|-----|------|-------|-----|------|------|------|------|-------|
| 7.5 | 2.5 | 82.6 | 122.7 | 5.1 | 23.8 | 65.0 | 0.16 | 0.89 | 129.9 |

PE to NAHF Mr. Jerry 244K (ASA# 4246053) from 12/1/25 to 3/6/26. Safe In calf. M65 brings together some truly proven and predictable cow families in her pedigree. We purchased her stout-made sire, J5105B, from Clearwater, and he has consistently produced outstanding replacement females—and this full baldy is no exception. With her combination of structural integrity and maternal strength, she's the kind that will add reliability and longevity to any herd.



Lot 22

FALL BRED HEIFERS

BARNHILL SIMMENTALS

23

BFSF *Hersheys Kisses* M87

BD. 3/21/24 • ASA#. 4651500 • Purebred
Tattoo. M87 • Adj. BW. 83 lbs.

W/C RELENTLESS 32C

sire JSUL SOMETHING ABOUT MARY 8421
JBSF PROUD MARY

STF MUCH MORE K300

dam STF MISS ZW87

STF DECEPTION W153

| CE | BW | WW | YW | MCE | Milk | MWW | Marb | REA | API |
|------|-----|------|------|-----|------|------|-------|------|-------|
| 12.8 | 0.4 | 62.8 | 90.4 | 4.8 | 16.0 | 47.3 | -0.09 | 0.69 | 109.8 |

AI'd to WHF JS CCS Woodford (ASA# 4068398) on 1/14/26. PE to FSSR Chief Executive Order (ASA# 3905201) from 2/1/26 to 3/1/26. The pedigree on this female needs no introduction. She is out of SAM and the great STF Miss ZW87 cow, who has made a lasting impact for Silver Towne, Sloup Simmentals, and the Barrons. Unfortunately, ZW87 was lost last fall, making this one of the last opportunities to own a female from this legendary cross. M87 is smooth in her makeup while still carrying the power to become an outstanding future donor.



Lot 23



DAM

BOHLANDER SIMMENTALS

24

BOH *Miss Benelli* M63

BD. 2/23/24 • ASA#. 4654837 • Purebred
Tattoo. M63 • Adj. BW. 56 lbs.

WS PROCLAMATION E202

sire CLRWTR PROCLAMATION J5105B
CLRWTR SHADES OF RED

SVF TRUE JUSTICE D100

dam BOH BENELLI

BESH MS MARCH BZ35

| CE | BW | WW | YW | MCE | Milk | MWW | Marb | REA | API |
|------|-----|------|-------|-----|------|------|------|------|-------|
| 11.7 | 0.5 | 77.6 | 114.3 | 7.5 | 24.0 | 62.7 | 0.13 | 0.86 | 135.6 |

PE to NAHF Mr. Jerry 244K (ASA# 4246053) from 12/1/25 to 3/6/26. Safe in calf. As they say, there's power in the blood—featuring Proclamation, Shear Force, and Expecting a Dream in her pedigree. This super-attractive baldy is sure to catch your eye on sale day. With her striking look and proven genetic backing, she combines eye appeal with the kind of performance you can count on.



Lot 24

BOHLANDER SIMMENTALS

25

BOH *Miss Poppy* M61

BD. 2/22/24 • ASA#. 4654835 • Purebred
Tattoo. M61 • Adj. BW. 54 lbs.

WS PROCLAMATION E202

sire CLRWTR PROCLAMATION J5105B
CLRWTR SHADES OF RED

WHF BLACKSTONE F38

dam BOH MISS POPPY

BOH VENUS

| CE | BW | WW | YW | MCE | Milk | MWW | Marb | REA | API |
|------|------|------|-------|-----|------|------|------|------|-------|
| 13.4 | -0.4 | 78.6 | 116.4 | 7.9 | 24.5 | 63.7 | 0.18 | 0.88 | 140.4 |

PE to NAHF Mr. Jerry 244K (ASA# 4246053) from 12/1/25 to 3/6/26. Safe in calf. Here is a really extended daughter of our powerful Proclamation son, J5105B, who has been producing some outstanding daughters. This female sells safe in calf to our Lucky Penny herdsire, Jerry, a son of Mr. SR Right Now out of a Black Hawk daughter, offering a strong combination of proven genetics and future potential.



Lot 25

FALL BRED HEIFER & SPRING PAIRS

26

BOHLANDER SIMMENTALS

BOH *Miss Stacey* M62

BD. 2/22/24 • ASA# 4654836 • Purebred
Tattoo. M62 • Adj. BW. 56 lbs.

WS PROCLAMATION E202
sire CLRWTR PROCLAMATION J5105B
CLRWTR SHADES OF RED

LMF REVENUE Z24
dam WHF STACEY 342C
WHF STACEY 242Y

| CE | BW | WW | YW | MCE | Milk | MWW | Marb | REA | API |
|------|-----|------|-------|-----|------|------|------|------|-------|
| 10.8 | 0.8 | 77.1 | 106.9 | 7.0 | 27.0 | 65.5 | 0.11 | 0.85 | 128.2 |

PE to NAHF Mr. Jerry 244K (ASA# 4246053) from 12/1/25 to 3/6/26. Safe in calf. Another highly attractive J5105B daughter that's destined to make a great cow. She is safe in calf to NAHF Jerry, a son of Mr. SR Right Now, combining proven genetics with strong maternal potential.



Lot 26

THE CLEAR CHOICE spotlight Congratulations to our 2025 Winners!



Supreme Champion Heifer • Champion Purebred Heifer
BESH WHF Addy Lou MJU4 • Cash Rumble



Reserve Supreme Champion Heifer • Reserve Champion Purebred Heifer
NAHF Miss SAM 422M • Sadie Jackson



Champion Percentage Heifer
CLRWTR Rory M63 • Taylor Ellington



Reserve Champion Percentage Heifer
CLRWTR Dahlia L79D • Taylor Ellington



Lot 27



BREYMIER FARMS



CLRWTR *Jazzy* H5105Z

BD. 2/10/20 • ASA# 3809454 • 3/4 Simmental
Tattoo. H5105Z • Adj. BW. 88 lbs.

W/C LOADED UP 1119Y

sire **JASS ON THE MARK 69D**

JASS SABLE'S TIME 53X

S A V BRILLIANCE 8077

dam **CLRWTR JOYS BRILLIANCE**

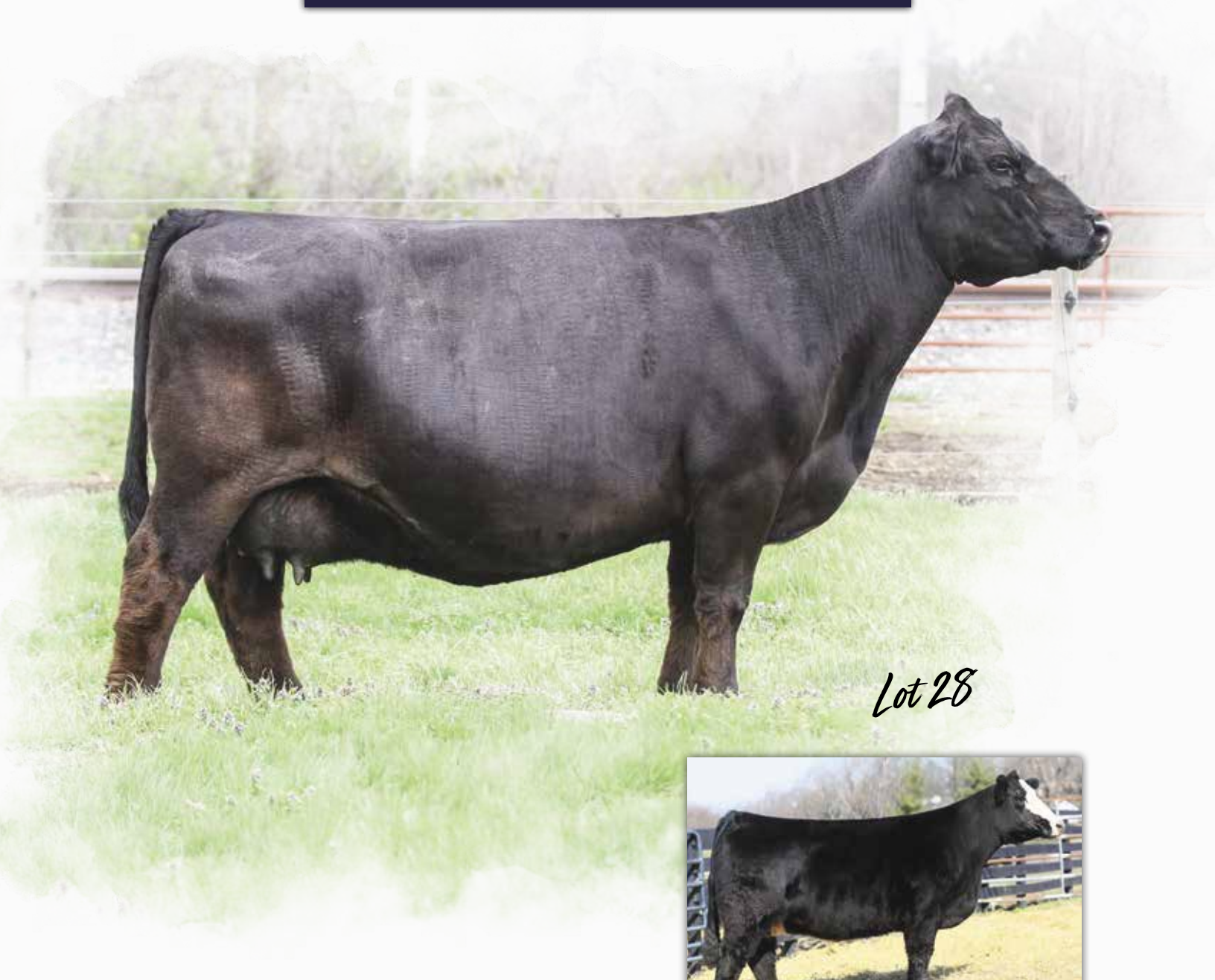
JF EBONY'S JOY 5105R

| CE | BW | WW | YW | MCE | Milk | MWW | Marb | REA | API |
|-----|-----|------|-------|-----|------|------|-------|------|------|
| 7.7 | 2.3 | 70.8 | 105.7 | 3.3 | 21.9 | 57.5 | -0.12 | 0.74 | 86.7 |

AI'd to BCR Dailed In (ASA# 4323168), sexed female, on 4/5/26.

Lot 27A: Purebred Heifer Calf | ASA# 4668198 | BD: 1/11/26 | Tattoo: P33
Sired by TJSC Coping With Destiny 9K

It's always hard to write footnotes on females like this, mainly because we could go on for days. Jazzy was a past Clear Choice Female sale highlight and has proven her worth since stepping foot on our farm. With a few daughters already showing generating potential in our program, an abundance of embryos sitting in our tank, and a very promising ET calf crop on the ground we thought it was time to let her go. When we find a needle in the hay stack we seldom let them walk away. H5105Z is long bodied, level in her hip, powerfully constructed, wild necked, great uddered, and stands on a big foot. Jazzy has produced an outstanding herd bull by Proclamation, an Ohio Beef Expo sale highlight Remedy daughter that sold to Woerner Cattle in Nebraska, multiple full sisters retained in our own program, as well as a littler of Remedy & Sam ET babies this winter that will be offered this fall and maybe the one that resembles her the most is the Coping with Destiny heifer on her side. We are going to offer them as a pair, with the potential of a 3 in 1 by sale day. Jazzy was Inseminated on 4-5 to Sexed BCR Dialed In L111. H5105Z has only ever been IVF aspirated while pregnant and is averaging 42 oocytes and 18 frozen embryos in her lifetime. We are going to retain 1 flush with a minimum of 6 freezable embryos per flush at our expense and the buyer's convenience.



Lot 28



WHF Andie 365A
 Dam of Lots 28 and 28A

Anyone who has done much ET work knows that sometimes you have to take advantage of timing, and when this female's heat cycle lined up with our embryo work, that's exactly what we did. She carried her maternal sister sired by Next Level, making this one of the most unique ET pairs we've ever offered. The power and influence of Andie on the breed is undeniable, and we're thankful to be a part of her story. 365H is in the prime of her life and, in our opinion, a near-perfect SimAngus female, with tremendous revenue potential on both sides of this pair—we can't wait to see where this feature lot ends up!

28

BESHEARS SIMMENTALS

WHF Andie 365H ET Pair

BD. 3/4/20 • ASA# 3770578 • 1/2 Simmental
 Tattoo. 365H • Adj. BW. 73 lbs.

DAMERON FIRST CLASS

sire **COLBURN PRIMO 5153**

SILVEIRAS SARAS DREAM 1339

MR HOC BROKER

dam **WHF ANDIE 365A**

PRS SUMMER W364

| CE | BW | WW | YW | MCE | Milk | MWW | Marb | REA | API |
|-----|-----|------|-------|-----|------|------|------|------|-------|
| 8.9 | 2.5 | 79.8 | 119.8 | 1.8 | 19.5 | 59.9 | 0.15 | 0.41 | 111.4 |

Lot 28A: Purebred ET Heifer Calf | ASA# Pending | BD: 3/4/26
 Embryo Calf by Next Level x WHF Andie 365A



29

SPSF *Miss Secret* 11M

SPRINGFIELD SIMMENTALS

BD. 2/20/24 • ASA# 4348966 • Purebred
Tattoo. 11M • Adj. BW. 76 lbs.

ES/WC INTEGRITY FA117-3
sire **W/C INTEGRITY 7102K**
MISS WERNING 534R
GEFF COUNTY O
dam **SPRINGFIELD`S COUNTY`S SECRET**
MAST`S SECRECY

| CE | BW | WW | YW | MCE | Milk | MWW | Marb | REA | API |
|------|-----|------|-------|-----|------|------|-------|------|-------|
| 10.9 | 2.2 | 70.8 | 109.5 | 6.2 | 20.9 | 56.2 | -0.09 | 1.16 | 113.2 |

Lot 29A: Purebred Heifer Calf | ASA# 4663345 | BD: 2/17/26 | Tattoo: 11P
Sired by Schooley Krown 28K

Miss Secret is one that's hard to part with. Her dam is quickly proving herself as a top producer on our farm, and the strength of this pedigree really stands out, combining the influence of Victoria Secret on the bottom side with the renowned Werning 534R cow on the top. Miss Secret is set up for a bright future, and with the outstanding calf at her side, she's a must-see on sale day—you won't want to miss this opportunity.



30

FFS SS *Kiana* K4

ELLINGTON, TAYLOR

BD. 10/8/22 • ASA# 4190291 • Purebred
Tattoo. K4 • Adj. BW. 73 lbs.

HPF/HILL UPRISING C104
sire **SO REMEDY 7F**
B&K CREAM SODA 8D
HILB ORACLE C033R
dam **B-C LOOKIN SHARP 7002E**
PRS LOOK OF H25 W264

| CE | BW | WW | YW | MCE | Milk | MWW | Marb | REA | API |
|------|-----|------|-------|-----|------|------|-------|------|-------|
| 10.1 | 2.2 | 77.3 | 116.0 | 5.4 | 21.2 | 59.8 | -0.06 | 0.76 | 107.3 |

Lot 30A: Purebred Bull Calf | ASA# 4668054 | BD: 3/9/26 | Tattoo: P366
Sired by TLC Lookin For Love L863

Yes, you're reading the pedigree correctly—this is a SO Remedy direct daughter of the great Lookin Sharp! This represents a rare opportunity to acquire Simmental genetics of this caliber. Lookin Sharp commanded \$56,000 when she sold to Jones Cattle after producing countless winners and high-selling progeny for Badger Creek and Sloup Simmentals. With this kind of proven pedigree and production behind her, this outstanding pair offers tremendous earning potential.



31

SS *Annibel* J198

BROOKLAND FARM

BD. 10/5/21 • ASA# 4088367 • Purebred
Tattoo. J198 • Adj. BW. 88 lbs.

MR CCF VISION
sire **MR CCF 20-20**
HTP SVF DEW THE STROKE
RGRS SRG TWO STEP 20Z ET
dam **HLTS JEWEL G198**
EKHCC RED JEWEL 760

| CE | BW | WW | YW | MCE | Milk | MWW | Marb | REA | API |
|-----|-----|------|------|-----|------|------|-------|------|-------|
| 8.0 | 2.4 | 69.2 | 93.4 | 3.9 | 15.9 | 50.4 | -0.02 | 0.91 | 105.3 |

Bred on 9/12/25 to BRKLN D Brimstone L32 (ASA# 4549214). Due 6/22/26.
Here is a really attractive daughter of 20-20, going back to the legendary Red Jewel, with a strong pedigree and a very balanced, feminine build. She is bred to calve soon to Brimstone, our son of SAM x Sheza Heartbreaker, and we're excited about this pairing as we expect a calf with excellent structure, eye appeal, and genetics to match.

BRED COWS & COW-CALF PAIRS

EVERHART FARMS

32

EVERHARTS 90J

BD. 4/7/21 • ASA#. 4667334 • Purebred
Tattoo. 90J • Adj. BW. 69 lbs.

W/C LOADED UP 1119Y

sire **CLRWTR DILLON STACKED UP**
HF SERENA

HTP SVF IN DEW TIME

dam **DANR MAGGIE MAY**
DANR SNOOKIE

| CE | BW | WW | YW | MCE | Milk | MWW | Marb | REA | API |
|-----|-----|------|-------|-----|------|------|------|------|------|
| 9.4 | 1.9 | 71.3 | 101.0 | 4.7 | 18.8 | 54.3 | 0.13 | 0.83 | 72.5 |

Lot 32A: Purebred Heifer Calf | ASA# Pending | BD: 4/2/26 | Tattoo: 90P
Sired by EVERHARTS Foxtrot 86G (ASA# 4232520)

Backed by the Lot 1 in the first Clear Choice Bull Sale, this snake-necked baldy does all the right things to make any cowman happy. Sound at the ground, big ribbed, and backed by a solid no miss In Dew Time daughter 90J is just hitting her stride. 90J currently has a baldy heifer calf sired by our long-time herd sire Everharts FoxTrot. FoxTrot would be a son of our Foxy donor that has sold champions all over, and most notably the 24/25 PTP Show Female of the year.



33

BFSC *Ginger* 015J

BD. 1/3/21 • ASA#. 3969400 • Purebred
Tattoo. 015J • Adj. BW. 85 lbs.

SVF STEEL FORCE S701

sire **MR HOC BROKER**
JM BF H25

LLSF UPRISING Z925

dam **BFSC RIGHT TO LOVE 015D**
RP/MP RIGHT TO LOVE 015U

| CE | BW | WW | YW | MCE | Milk | MWW | Marb | REA | API |
|-----|-----|------|-------|-----|------|------|------|------|------|
| 4.8 | 4.3 | 80.1 | 114.7 | 2.7 | 18.5 | 58.5 | -0.1 | 0.71 | 88.1 |

Lot 33A: Purebred Steer Calf | ASA# Pending | BD: 1/30/26 | Tattoo: 15P
Sired by SO Remedy 7F

With her flushmate gathering so much attention in last year's sale we decided why not one up her and bring her red baldy sister. When they are bold ribbed, big-footed, and have a front end that could make anyone stop and do a double take, footnotes don't have to be very long. Don't miss out!



34

SPRINGFIELD SIMMENTALS

CHARMONT *Minnie's Pearl*

BD. 10/11/20 • ASA#. 3849314 • Purebred
Tattoo. HA8Z • Adj. BW. 72 lbs.

REMINGTON LOCK N LOAD54U

sire **DMCC/WOOD FULLY LOADED 39D**
AUBREYS BLACK BLAZE III

CHARMONT SHO CAN DO L801

dam **CHARMONT MINNIE A88Z**
CHARMONT SAPPHIRE X88P

| CE | BW | WW | YW | MCE | Milk | MWW | Marb | REA | API |
|-----|-----|------|------|-----|------|------|------|------|-------|
| 8.8 | 2.5 | 67.9 | 97.5 | 5.4 | 22.7 | 56.5 | 0.07 | 1.03 | 117.7 |

Lot 34A: Purebred Heifer Calf | ASA# 4663346 | BD: 2/27/26 | Tattoo: 16P
Sired by CLRWTR Remedy L5105W

MINNIE'S PEARL is a cow that will not miss. Well built and with a calm demeanor, she produces the type of calves everyone is looking for. MINNIE'S PEARL heifer calf at the side is definitely a keeper. Don't miss her on sale day!





Lot 35



HLTS *Elizabeth* H128

BARNHILL SIMMENTALS

BD. 1/19/20 • ASA# 3770713 • Purebred
Tattoo. H128 • Adj. BW. 61 lbs.

WS ALL-AROUND Z35

sire **OMF EPIC E27**

OMF TIME LESS B100

CCR WIDE RANGE 9005A

dam **RRCC ELIZABETH 75F**

RRCC MISS WELSHS DREAM6B

| CE | BW | WW | YW | MCE | Milk | MWW | Marb | REA | API |
|------|------|------|-------|-----|------|------|------|------|-------|
| 16.3 | -1.9 | 76.7 | 113.1 | 9.7 | 20.4 | 58.6 | 0.14 | 0.93 | 147.1 |

PE to FSSR Chief Executive Officer (ASA# 3905201) from 5/21/25 to 8/15/25. A deep, moderate-framed OMF Epic daughter that consistently brings in a good calf each year. These Epic cows are in high demand, and it's easy to see why—she is docile, well-uddered, and easy to work with. She is safe to our senior herdsire, FSSR Chief Executive Officer, who has been making a significant impact in our program. She should have a calf by sale day, making this a dependable and productive pair.



©Dan Craig

Lot 36



WS *Ms Pinnacle* G12

BROOKLAND FARM

BD. 1/3/19 • ASA# 3595145 • Purebred
Tattoo. G12 • Adj. BW. 80 lbs.

W/C LOADED UP 1119Y

sire **W/C PINNACLE E80**

MISS WERNING KP 8543U

W/C LOCK DOWN 206Z

dam **WS MS LOCK DOWN B60**

WS MS HARD CORE Z64

| CE | BW | WW | YW | MCE | Milk | MWW | Marb | REA | API |
|------|-----|------|-------|-----|------|------|------|------|-------|
| 11.8 | 0.0 | 72.9 | 103.7 | 5.5 | 21.1 | 57.5 | 0.12 | 0.70 | 130.0 |

PE to BRKLN D Bo Jackson M862 (ASA# 4466634) from 12/5/25 to 3/15/26. If you're looking for a ground sow, look no further—G12 checks all the boxes. She originated from the Walsh dispersal and has done a tremendous job for us, proving herself time and time again. These Pinnacle daughters are known for their productivity, being excellent mothers with super udders and easy fleshing ability. G12 sells bred to our attractive young W/C Bet On Red son, Bo Jackson, making this an exciting opportunity with a lot of potential.



Lot 37



NAHF *Miss Bella* 928G

LUCKY PENNY CATTLE COMPANY

BD. 9/30/19 • ASA# 3830689 • 3/4 Simmental
Tattoo. 928G • Adj. BW. 84 lbs.

MR FLAT ROCK B463

sire **GXK MR JERRY 351E**

GXK MS BROKERJEAN 01B

CLRWTR ALL YOU NEED C74E

dam **CLRWTR BELLA E92**

CLRWTR BOVINE BELLA B92H

| CE | BW | WW | YW | MCE | Milk | MWW | Marb | REA | API |
|-----|-----|------|-------|-----|------|------|------|------|------|
| 7.0 | 2.9 | 73.8 | 108.9 | 3.1 | 15.7 | 52.5 | 0.11 | 0.77 | 97.4 |

PE to Five Star MVP (ASA# 4406801) from 6/1/25 to 8/1/25. Should calve by sale day. Sells with 5 units of Five Star MVP semen. 928G traces back to some of our original foundation genetics, adding depth and consistency to her pedigree. This female is bred to our exciting new herd sire, Five Star MVP, and will sell as a pair by sale day. With her strong maternal background and promising mating, she represents a valuable opportunity for both immediate return and long-term genetic impact.

BRED COWS & COW-CALF PAIRS

38

EGGERSMAN, JORDAN

DAF *Rachel* F08

BD. 1/15/18 • ASA#. 3534001 • 1/2 Simmental
Tattoo. F08 • Adj. BW. 65 lbs.

WIS PILGRIM H182U
sire **TL BOTTOMLINE**
MISS STAR ABOVE
K C F BENNETT TOTAL
dam **OBCC RACHEL 9036**
JILLCO 'S RACHEL 6088

| CE | BW | WW | YW | MCE | Milk | MWW | Marb | REA | API |
|------|-----|------|------|-----|------|------|------|------|-------|
| 10.6 | 0.9 | 60.7 | 94.4 | 6.5 | 17.2 | 47.9 | 0.29 | 0.26 | 107.8 |

Sells with calf at side, information available sale day. F08 has been a highly productive and profitable female for our program, and we're excited to offer a strong lot in the Clear Choice Sale. She sells with a calf at side sired by our Copacetic son, M10. Be sure to stop by the pens and take a look—this is a pair that deserves your attention.



TL Bottomline - Sire of Lot 38

39

BARNHILL SIMMENTALS

JS *Church Bell* 9E

BD. 3/16/17 • ASA#. 3278594 • Purebred
Tattoo. 9E • Adj. BW. 80 lbs.

SVF STEEL FORCE S701
sire **MR HOC BROKER**
JM BF H25
JS BURNING UP 33R
dam **JS FLATOUT FLIRTY 46T**
JS SHES SO FINE 14P

| CE | BW | WW | YW | MCE | Milk | MWW | Marb | REA | API |
|-----|-----|------|-------|-----|------|------|-------|------|------|
| 6.2 | 3.8 | 71.3 | 103.6 | 3.6 | 24.3 | 59.8 | -0.22 | 0.98 | 89.0 |

PE to FSSR Chief Executive Order (ASA# 3905201) from 2/15/26 to 3/6/26. Natural service observed 2/17/26. This is a big, powerful black baldy female. Church Bell was the 2022 Reserve National Champion Cow-Calf Pair at NAILE, and this female carries that same impressive structure—long-sided, long-fronted, with tremendous foot size and substance of bone. She offers a very unique pedigree: her dam, 46T, is the granddam of JS Black Satin 9B "Boots," a cornerstone female for Griswold. Being a Broker daughter, she is a 3/4 sister in blood to Boots and also a flushmate to the former Clearwater donor JS Southern Belle, making her a rare and highly valuable genetic opportunity.



Lot 39

40

CLEARWATER SIMMENTALS

CLRWTR *Evelyn* K76A

BD. 9/7/22 • ASA#. 4217964 • Purebred
Tattoo. K76A • Adj. BW. 72 lbs.

PROFIT
sire **UDE PROFIT 67F**
TJSC KANSA 823B
W/C EXECUTIVE ORDER 8543B
dam **BLC1 EVELYN 476E**
WAGR MELODY 5076C

| CE | BW | WW | YW | MCE | Milk | MWW | Marb | REA | API |
|-----|-----|------|-------|-----|------|------|------|------|-------|
| 7.3 | 3.0 | 84.4 | 117.0 | 4.4 | 18.9 | 61.0 | 0.19 | 0.67 | 118.9 |

All'd to W/C Truth Be Told on 12/13/25. No bull exposure. Here's some truly top-shelf genetics—an own daughter of Evelyn, a proven donor working in the Shipwreck program. K76A is flawlessly designed and, truthfully, one we should probably be keeping. She's loaded with power, extension, and presence, offering versatility to go in a variety of directions. All'd to the Werning high-seller Truth Be Told, with no bull exposure, she sets up for an exciting fall calf.



Lot 40



DAM



ERIK MCKITTRICK

Commercial

1/2 SM 1/2 Commercial Angus

sire SVF BUCKLE-UP B58
NB PROOF POSITIVE 15F
NB POSITIVELY CRYSTAL

dam **COMMERCIAL ANGUS**

AI'd to Felt Perseverance on 8/13/25. We're pleased to be a part of the Clear Choice Sale. This commercial female is highly functional and built to meet today's market demands. Sired by a proven Neal Brothers bull, she is bred to the calving-ease baldy sire Perseverance, setting her up for a productive and profitable future.



Bid Online

DVAuction
Broadcasting Real-Time Auctions



www.dvauction.com/events/259175

Can't make the sale? Bid from home with DVAuction's "real-time" internet bidding service at www.dvauction.com.

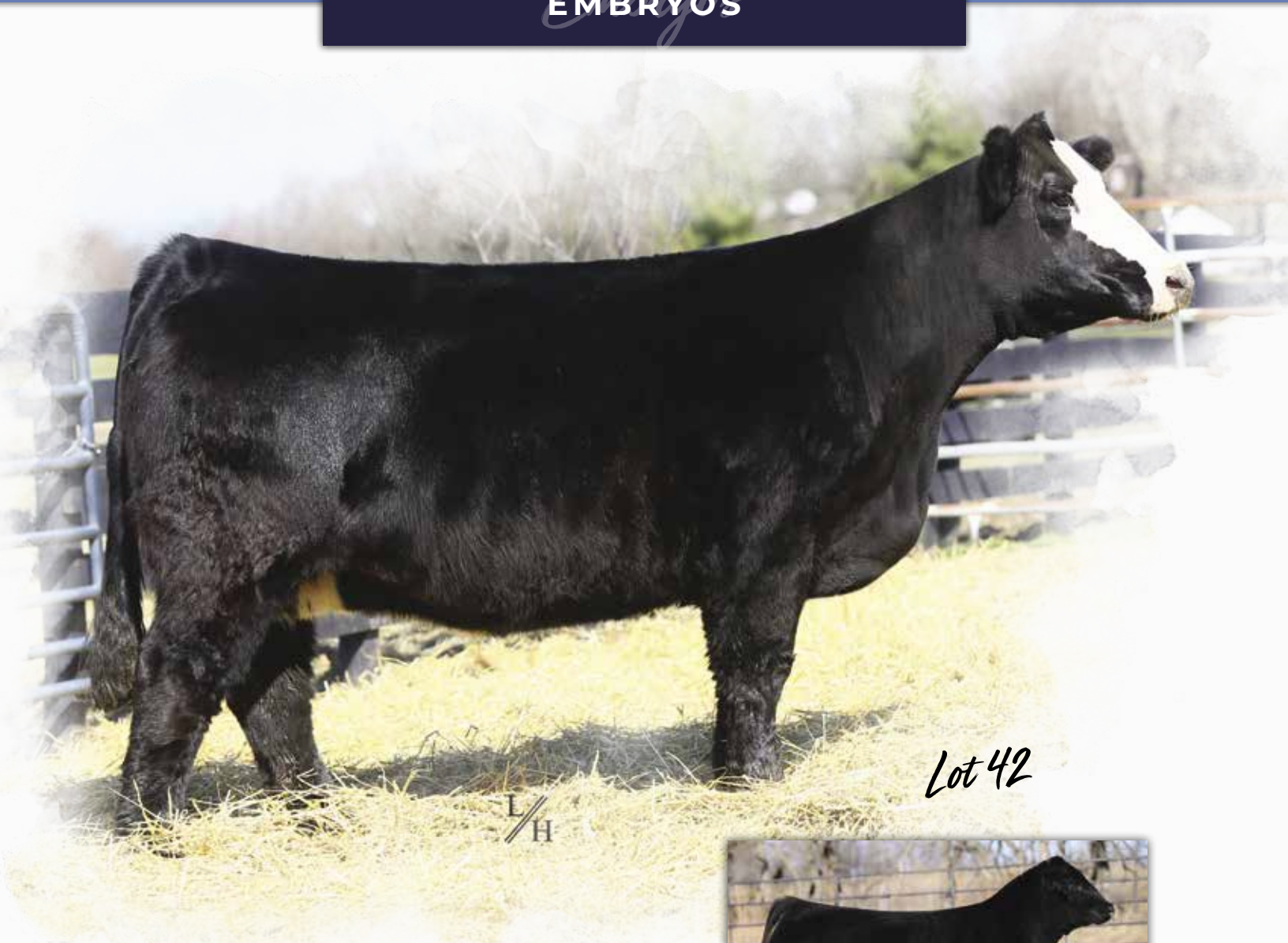
BID ONLINE IN THREE EASY STEPS!

1. Create an account at www.dvauction.com under the "register" tab
2. Apply for bidding approval by clicking on the "details" tab **at least 24-hours prior** to the auction. A DVAuction representative will notify you once you have been approved.
3. Tune in for the sale and make your purchases!

After the sale, contact the sale manager or owner to arrange transportation and payment. High speed internet is required for successful bidding. Be sure to check the lag-time monitor in the top left corner to ensure real-time broadcasts.

Proxy Bidding. If you can't make time to watch the sale, register a proxy bid and let our system represent your bid while you're away. Look for the "proxy bid" tab on the auction listing, and fill in your maximum bids. We'll handle the rest!

Having Troubles? During the auction, you can type a message to the operator at any time for assistance. Our full-time support team can also be reached at 402-474-5557.



Lot 42

L/H



BOWJ Manifest 985M
Sire of Lot 42 Embryos



BESHEARS SIMMENTALS

WHF *Andie* 365A

BD. 10/5/13 • ASA# 2860142 • Purebred
Tattoo. 365A • Adj. BW. 83 lbs.

4/B DYNAMO
sire **BOWJ MANIFEST 985M**
HCCO COUNTESS 985F
MR HOC BROKER
dam **WHF ANDIE 365A**
PRS SUMMER W364

Planned Mating Projected EPDs

| CE | BW | WW | YW | MCE | Milk | MWW | Marb | REA | API |
|-----|-----|------|-------|-----|------|------|-------|------|-------|
| 7.1 | 3.2 | 79.2 | 108.7 | 2.6 | 24.7 | 64.2 | -0.02 | 0.65 | 105.4 |

Selling 3 RSF embryos, guaranteeing 1 pregnancy if implanted by a certified embryologist.

It's not every day you have the opportunity to acquire embryos from a female of this caliber—Andie 365A has been a true cornerstone of our program, continuing to make waves each year through her progeny. We're especially excited about this mating to BOWJ Manifest, the high-selling bull at Hartman's Bull Sale, combining proven performance with elite genetics. Offering IVF sexed heifer embryos—an opportunity to invest in the future of your program.



Lot 43



Maternal Sister to Lot 43 Donor

FULL CIRCLE FARM



WHF *Summer* 009J

BD. 9/13/21 • ASA#. 4070362 • 3/4 Simmental
Tattoo. 009J • Adj. BW. 82 lbs.

sire G A R SURE FIRE
EGL FIRESTEEL 103F
TJ 22X
CCR WIDE RANGE 9005A
dam WHF SUMMER 365C
WHF ANDIE 365A

Lot 43A: 3 RSF Embryos by SO Remedy 7F

| CE | BW | WW | YW | MCE | Milk | MWW | Marb | REA | API |
|------|-----|------|-------|-----|------|------|------|------|-------|
| 12.3 | 0.5 | 79.2 | 119.7 | 4.5 | 24.2 | 63.7 | 0.05 | 0.84 | 124.7 |

Lot 43B: 3 RSF Embryos by Revelation 2K

| CE | BW | WW | YW | MCE | Milk | MWW | Marb | REA | API |
|------|-----|------|-------|-----|------|------|------|------|-------|
| 10.1 | 1.2 | 76.6 | 107.0 | 3.1 | 20.0 | 58.2 | 0.15 | 0.75 | 122.5 |

The full sister to WOODFORD - the only one in existence! Bourbon Girl is a direct daughter of the immortal Summer 365C - who was a multi-time National Champion for JS Simmentals and Wayward Hill - the matriarch female behind the continued success of their program! We are always looking for the type of animals that we feel will not only take our program to the next level, but our customers as well. Bourbon Girl is easily one of the biggest bodied, soundest made females I have ever laid eyes on, and when I found out she was a full sister to Woodford - my heart rate increased!! Woodford continues to prove why he's trusted as one of the most popular sires in the entire industry. Progeny are finding the backdrop across the country, and his calves are sale highlights all across the industry. Consistency and proven pedigrees are important, no matter the show ring or the front pasture -- and an animal this unique is easily a curve bender for generations to come. We are incredibly excited to offer you such high profile proven genetics, and we feel that this combination to Revelation, the most dominant sire currently in the Simmental breed, and Remedy that needs no introduction, is one that will be a wise investment! Make sure you get in on these before we try to put them all in for ourselves, because we could all use a shot of Bourbon in our life. Owned with Wayward Hill.

EMBRYOS



TL On The Run 106K
Sire of Lots 44A and 45A



Rocking P Private Stock H010
Sire of Lots 44B and 45B



JWC Engage 144M
Sire of Lot 44



SLOUP SIMMENTALS

SLOUP SIMMENTALS

44

SS *Eliannah* E65

BD. 9/5/17 • ASA#. 3441591 • 3/4 Simmental
Tattoo. E65 • Adj. BW. 83 lbs.

YARDLEY UTAH Y361

sire **W/C RELENTLESS 32C**
MISS WERNING KP 8543U

B C LOOKOUT 7024

dam **DAF SUMMER Z65**
DAF SUMMER TIME U29

Lot 44A: 3 RSF Embryos by TL On The Run 106K

| CE | BW | WW | YW | MCE | Milk | MWW | Marb | REA | API |
|------|-----|------|------|-----|------|------|------|------|-------|
| 11.2 | 0.6 | 60.6 | 83.6 | 4.4 | 18.8 | 49.1 | 0.15 | 0.90 | 116.9 |

Lot 44B: 3 RSF Embryos by Rocking P Private Stock H010

| CE | BW | WW | YW | MCE | Milk | MWW | Marb | REA | API |
|------|-----|------|-------|-----|------|------|------|------|-------|
| 10.8 | 1.2 | 72.6 | 102.8 | 3.5 | 16.0 | 52.2 | 0.34 | 0.77 | 127.8 |

Lot 44C: 3 RSF Embryos by JWC Engage 144M

| CE | BW | WW | YW | MCE | Milk | MWW | Marb | REA | API |
|-----|-----|------|------|-----|------|------|------|------|-------|
| 8.8 | 1.0 | 61.6 | 81.0 | 3.3 | 19.0 | 49.8 | 0.05 | 0.98 | 105.8 |

Eliana E65 is one of our leading and most proven donors, and with her striking blaze face, she's quite the standout. Backed by the powerful Summer E65 family and sired by Relentless, she combines pedigree, performance, and eye appeal. We've recently worked her to some exciting sires—take your pick from On the Run, Engage, or Private Stock—and all are IVF sexed heifers, offering exceptional opportunity for top-end genetics.

45

DWYER *Lady Relentless* 128J

BD. 1/19/21 • ASA#. 3940932 • 3/4 Simmental
Tattoo. 128J • Adj. BW. 70 lbs.

YARDLEY UTAH Y361

sire **W/C RELENTLESS 32C**
MISS WERNING KP 8543U

FBFS WHEEL MAN 649W

dam **MISS WHEEL MAN 006B**
WCC MISS 006

Lot 45A: 3 RSF Embryos by TL On The Run 106K

| CE | BW | WW | YW | MCE | Milk | MWW | Marb | REA | API |
|------|-----|------|------|-----|------|------|------|------|-------|
| 11.7 | 0.4 | 65.2 | 93.3 | 5.8 | 18.7 | 51.2 | 0.13 | 0.63 | 115.5 |

Lot 45B: 3 RSF Embryos by Rocking P Private Stock H010

| CE | BW | WW | YW | MCE | Milk | MWW | Marb | REA | API |
|------|-----|------|-------|-----|------|------|------|------|-------|
| 11.3 | 1.0 | 77.2 | 112.5 | 4.8 | 15.9 | 54.3 | 0.32 | 0.50 | 127.1 |

Lot 45C: 3 IVF Unsexed Embryos by CCR Cowboy Cut 5048Z

| CE | BW | WW | YW | MCE | Milk | MWW | Marb | REA | API |
|-----|-----|------|-------|-----|------|------|------|------|-------|
| 9.1 | 2.2 | 81.9 | 116.1 | 6.7 | 19.2 | 59.9 | 0.28 | 0.59 | 129.8 |

128J is one of the most stunning blaze-faced females on the farm. A newer donor addition, she came in and went straight to work, producing an outstanding calf and now contributing in the ET pen. We've had some highly successful flushes with her and are excited to offer our very best progeny in the Clear Choice Sale, showcasing her exceptional genetics and consistent productivity.

EMBRYOS



Lot 46



\$90,000 Daughter of Bailey's Profit's Dream



RJ Trust Fund 212K - Sire of Lot 47B



Lot 47

FULL CIRCLE FARM

46

BAILEY'S Profit's Dream

BD. 1/7/17 • ASA#. 3291938 • Purebred
Tattoo. 706E • Adj. BW. 85 lbs.

WS PILGRIM H182U
sire **PROFIT**
WAGR PANARAMA 204Z
DSR COMMISSONER R827
dam **BAILEY'S MS DREAMY 946W**
SRF MISS DAKOTA 49K

Lot 46A: 3 RSF Embryos by Next Level

| CE | BW | WW | YW | MCE | Milk | MWW | Marb | REA | API |
|-----|-----|------|-------|-----|------|------|-------|------|------|
| 4.9 | 4.5 | 79.5 | 111.7 | 3.1 | 20.7 | 60.4 | -0.04 | 1.05 | 99.4 |

Lot 46B: 3 RSF Embryos by Revelation 2K

| CE | BW | WW | YW | MCE | Milk | MWW | Marb | REA | API |
|-----|-----|------|------|-----|------|------|------|------|------|
| 6.1 | 3.8 | 73.9 | 99.1 | 2.0 | 16.3 | 53.1 | 0.02 | 0.81 | 96.4 |

We could have never imagined the possibility of bringing a donor with this much proven success, prowess, and quality to our donor battery. We feel the true potential of this incredible donor is still untapped. "Bailey" was the Supreme Champion Female at '18 Jr Nationals for Sara Sullivan as well as a 6 figure sale highlight at the Hartman Customer Appreciation Sale. After her incredible show career, "Bailey" has gotten it done in the donor pen for Sullivan's with multiple sale toppers including a \$90,000 and \$72,000 Something About Mary daughters and Reckoning daughters that have commanded \$35,000 and \$25,000 each. Bailey is a unique combination of mass and elegance, with the foot size, length of spine, and extension that is hard to find. Bailey is designed for the show ring with the longevity needed to make it in the pasture and donor pen alike. We already knew the consistency and quality that this donor and cow family brings to the table being a flushmate to Bailey's One of a Kind - the sire to both our Ruby donor and Redman. We knew Bailey would easily fit the type and kind we like to raise! There may not currently be a sire as versatile as Next Level, nor a hotter sire in the Simmental breed than Revelation and we could not be any more confident in these brand new, "one of a kind" matings, not to mention the opportunity to get red/red baldy females with Next Level. It will be easier to raise your own daughters than showing against them. Owned with Hillcrest Farms. Progeny will register PB Simmental.

47

SSC/DPF Serenade 211H

BILL SLOUP & STEWART SIMMENTALS

BD. 2/11/20 • ASA#. 4036473 • Purebred
Tattoo. 211H • Adj. BW. 79 lbs.

MR CCF 20-20
sire **VCL FORESIGHT**
HCC0 COUNTLESS 412D
MR NLC UPGRADE U8676
dam **HF SERENA**
MISS KNOCKOUT 74T

Lot 47A: 3 RSF Embryos by SO Remedy 7F

| CE | BW | WW | YW | MCE | Milk | MWW | Marb | REA | API |
|-----|-----|------|-------|-----|------|------|------|------|-------|
| 8.6 | 2.4 | 79.3 | 118.4 | 3.1 | 23.7 | 63.2 | 0.02 | 0.81 | 108.5 |

Lot 47B: 3 RSF Embryos by RJ Trust Fund 212K

| CE | BW | WW | YW | MCE | Milk | MWW | Marb | REA | API |
|-----|-----|------|-------|-----|------|------|------|------|-------|
| 7.5 | 3.7 | 77.7 | 108.7 | 3.7 | 22.2 | 61.0 | 0.17 | 0.87 | 110.2 |

Serenade 211H has the physical attractiveness and power of the best females we have ever had the pleasure to work with. That list includes Onyx and Lookin Sharp I had a visitor stop by recently and said she was the most impressive female that he had ever seen. His words; "You just can't make one more perfectly." Serenade has a second to none phenotype, famine fronted, soggy middled, perfect udder with a stout build. These two sets of sexed heifer embryos will give a program the opportunity to add elite female genetics to their operation. We are glad to offer these sets and make them available in the Clearwater Appreciation Sale!

EMBRYOS



Lot 48

SIRE

CLEARWATER SIMMENTALS



Lot 49

SIRE

CLEARWATER SIMMENTALS

48

CLRWTR *Losta Luv* G422A

BD. 1/2/19 • ASA#. 3597781 • Purebred
Tattoo. G422A • Adj. BW. 82 lbs.

TL REVENANT 35
sire **REVELATION 2K**
RIED BANDED MAE
SC PAY THE PRICE C11
dam **CLRWTR LOSTA LUV G422A**
HPF LOTS A LOVE B422

Planned Mating Projected EPDs

| CE | BW | WW | YW | MCE | Milk | MWW | Marb | REA | API |
|-----|-----|------|-------|-----|------|------|------|------|-------|
| 4.8 | 4.3 | 83.4 | 118.3 | 2.0 | 20.7 | 62.3 | 0.10 | 0.82 | 104.3 |

Selling 3 RSF embryos, guaranteeing 1 pregnancy if implanted by a certified embryologist. G422A is a young donor we've been extremely impressed with, with a few of her progeny already making their way through our sale ring. She is an own daughter of the great Lotsa Love B422, selected from the HPF dispersal, and stems from a highly productive female line known for producing exceptional maternal daughters. G422A offers impressive depth, center body, and a tremendous hip, combining power with balance in a very functional package. This is a new mating being offered from her, sired by the popular Revelation 2K, featuring reverse-sorted heifer embryos—making this a rare, high-potential opportunity.

49

CLRWTR *Love Lots* G422B

BD. 1/2/19 • ASA#. 3667734 • Purebred
Tattoo. G422B • Adj. BW. 89 lbs.

TSN STATESMAN K006
sire **W/C HEADSHOT 957M**
W/C MISS WERNING 978G
SC PAY THE PRICE C11
dam **CLRWTR LOVE LOTS G422B**
HPF LOTS A LOVE B422

Planned Mating Projected EPDs

| CE | BW | WW | YW | MCE | Milk | MWW | Marb | REA | API |
|------|-----|------|-------|-----|------|------|------|------|-------|
| 10.4 | 0.9 | 92.9 | 134.0 | 6.5 | 26.1 | 72.4 | 0.26 | 0.90 | 137.0 |

Selling 3 conventional embryos, guaranteeing 1 pregnancy if implanted by a certified embryologist. G422B is an up-and-coming donor we've quietly been developing, and you'll be seeing more exciting offerings from her in the fall sale. She is an own daughter of the great Lotsa Love B422, selected from the HPF dispersal, and stems from a highly productive female line known for producing exceptional maternal daughters. G422B is sleek in her design while still offering plenty of depth, center body, and a tremendous hip—bringing together power and balance in a very attractive package. This marks the first mating to be offered from her, sired by the exciting young bull W/C Headshot. Conventional embryos.

50

DDA *Barbara* 2321

BD. 6/2/23 • ASA#. 4666710 • Purebred Angus
Tattoo. 2321

MR HOC BROKER
sire **JWC ENGAGE 144M**
MISS WERNING KP 8543U
PVF BLACKLIST 7077
dam **DDA BARBARA 2321**
DDA BARBARA 1507

Planned Mating Projected EPDs

| CE | BW | WW | YW | MCE | Milk | MWW | Marb | REA | API |
|-----|-----|------|-------|-----|------|------|------|------|-------|
| 8.8 | 0.9 | 72.0 | 101.1 | 3.9 | 21.2 | 55.8 | 0.20 | 0.78 | 106.8 |

Selling 3 RSF embryos, guaranteeing 1 pregnancy if implanted by a certified embryologist. We own a select group of Angus donors with Double Diamond Angus in Illinois, and Barbara 2321 is an up-and-coming PVF Blacklist female we're particularly excited about. She combines mass and center body with plenty of bone, a big level hip, and an attractive front one-third. We've produced reverse-sorted heifer embryos on her to JWC Engage, the high-selling Broker x 8543U son from JWC, and we can't wait to see some of these outstanding calves on the ground!



Lot 50

SIRE



51

SLOUP & HUENEFELD SIMMENTALS

JWC *Capital Gains* 195N

BD. 1/9/25 • ASA#. 4552727 • Purebred
Tattoo. 195N • Adj. BW. 89 lbs.

W/C BANKROLL 811D

sire **RJ TRUST FUND 212K**
HARA `S KIM KARDASHIAN 1C
WAGR DREAM CATCHER 03R

dam **MISS WERNING KP 8543U**
MISS WERNING 534R

| CE | BW | WW | YW | MCE | Milk | MWW | Marb | REA | API |
|------|-----|------|------|-----|------|------|-------|------|-------|
| 10.5 | 1.4 | 68.7 | 86.6 | 4.8 | 23.3 | 57.6 | -0.02 | 1.18 | 107.2 |

Selling 2 packages of 5 units, conventional semen.



52

LUCKY PENNY/CLEARWATER/SCHOOLEY

SCHOOLEY *Newcomer* 174N

BD. 1/31/25 • ASA#. 4567020 • 3/4 Simmental
Tattoo. 174N • Adj. BW. 72 lbs.

GIBBS 9114G ESSENTIAL

sire **TERS KODIAK 206K**
TECS EXTREME 709E
EGL FIRESTEEL 103F

dam **SCHOOLEY MISS 823F 068H**
SCHOOLEY MISS 3000A 823F

| CE | BW | WW | YW | MCE | Milk | MWW | Marb | REA | API |
|-----|-----|-------|-------|-----|------|------|------|------|-------|
| 8.5 | 2.6 | 101.8 | 162.4 | 3.9 | 28.1 | 78.9 | 0.54 | 1.14 | 153.4 |

Selling 2 packages of 5 units, conventional semen.



53

CLEARWATER SIMMENTALS

JWC *You Betcha* 865N

BD. 2/16/25 • ASA#. 4552723 • Purebred
Tattoo. 865N • Adj. BW. 85 lbs.

HOOK `S BOZEMAN 8B

sire **MR SR 71 RIGHT NOW E1538**
MISS SR C1538

dam **W/C ANGEL 8598F**
W/C MISS ANGEL 2870Z

| CE | BW | WW | YW | MCE | Milk | MWW | Marb | REA | API |
|------|------|------|-------|-----|------|------|------|------|-------|
| 13.9 | -1.0 | 81.9 | 131.1 | 8.0 | 23.9 | 64.8 | 0.32 | 0.94 | 145.1 |

Selling 2 packages of 5 units, conventional semen.

NEAL BROTHERS & ARMES SIMMENTALS

54

WCLC *Solid Rock* N502

BD. 2/15/25 • ASA#. 4541802 • 5/8 Simmental
Tattoo. N502 • Adj. BW. 78 lbs.

GIBBS FAST TRACK 0634H

sire **BSUM SUMMIT 303L**

BSUM 143J

BRIDLE BIT ECLIPSE E744

dam **GIBBS 0425H BLAKCAP 1145Y**

GIBBS 1145Y BLAKCAP9024W

| CE | BW | WW | YW | MCE | Milk | MWW | Marb | REA | API |
|------|------|------|-------|-----|------|------|------|------|-------|
| 13.5 | -0.2 | 93.4 | 151.8 | 7.3 | 25.7 | 72.3 | 0.70 | 0.07 | 167.0 |

Selling 2 packages of 5 units, conventional semen.



Lot 54

LUCKY PENNY CATTLE COMPANY

55

FIVE STAR *MVP* M60

BD. 3/22/24 • ASA#. 4406801 • Purebred
Tattoo. M60 • Adj. BW. 74 lbs.

MR SR MIC DROP G1534

sire **OMF JOURNEYMAN J24**

OMF DEKA D23

MR NLC UPGRADE U8676

dam **FIVE STAR SHEILA C1**

OMF SHEENA MARK Y1

| CE | BW | WW | YW | MCE | Milk | MWW | Marb | REA | API |
|------|------|------|-------|-----|------|------|------|------|-------|
| 14.4 | -1.1 | 85.0 | 137.8 | 7.2 | 20.7 | 63.2 | 0.23 | 0.63 | 145.3 |

Selling 4 packages of 5 units, conventional semen.



Lot 55

NEAL BROTHERS

56

RUBYS *Start Up* 3L105

BD. 9/25/23 • ASA#. 4370993 • Purebred
Tattoo. 3L105 • Adj. BW. 83 lbs.

SFG COWBOY LOGIC D627

sire **SFG HEAD START H0509**

SFG JERRI E97

WS ALL-AROUND Z35

dam **RUBYS LINDA 721E**

RUBYS LINDA 341A

| CE | BW | WW | YW | MCE | Milk | MWW | Marb | REA | API |
|------|------|------|-------|------|------|------|------|------|-------|
| 17.8 | -0.5 | 88.8 | 131.9 | 11.7 | 30.4 | 74.7 | 0.55 | 1.13 | 169.6 |

Selling 2 packages of 5 units, sexed female semen.



Lot 56

BESHEARS SIMMENTALS

57

B C R *Dialed In* L111

BD. 3/18/23 • ASA#. 4323168 • 3/4 Simmental
Tattoo. L111 • Adj. BW. 78 lbs.

WLE COPACETIC E02

sire **RP/BCR EMINENCE H005**

RP/MP BUILT TO LOVE A021

DWC GSC 71B

dam **DWC BECCA 35F**

AKERS RITA 0050

| CE | BW | WW | YW | MCE | Milk | MWW | Marb | REA | API |
|-----|-----|------|-------|-----|------|------|------|------|-------|
| 9.9 | 1.3 | 72.4 | 113.2 | 4.0 | 17.7 | 53.9 | 0.21 | 0.95 | 105.0 |

Selling 2 packages of 5 units, conventional semen.



Lot 57



DP Sales Management
153 Bourbon Hills
Paris, KY 40361



THE CLEAR
CHOICE
customer sale

SATURDAY, APRIL 25, 2026
1:00 PM EST • MILAN, IN