



Head of the Class

September 22nd, 2018 | 1:00 pm

Sanders Ranch, LLC | Louisburg, KS

Sanders Ranch, LLC

Louisburg, KS

816.225.2000, Steve Sanders

816.898.8990, Darrin Barbour, manager

darrin1@fairpoint.net

BF Black Simmentals

Auburn, NE

402.274.7454, Bill Fulton

573.682.7894, John McBee, manager

jlmcbec210@gmail.com

Bramlet Simmentals

Harrisburg IL

Bo, Ashley, John David, Cannon Bramlet

Dusty, Shea & Harper Hamilton

618.841.6763, Bo Bramlet

bramcattle@gmail.com

Wesner Livestock Ent.

Chalmers, IN

Barry, Courtney, Carly, and Bailey

219.863.4744, Barry

219.207.0325, Courtney

wesnerlivestock@yahoo.com

Speas Farms, Inc.

Elkhart, IA

405.501.4747 • Andrew Speas

andyspeas@yahoo.com

Schick/Haefner Cattle Co.

Clinton, IL

217.519.4095, Chris Schick

815.499.0522, Ryan Haefner

rhaefner@hudsonpines.com

Lydeon Cattle Co.

Myrtle, MO

765.430.6110, Justin Holmes

765.427.9078, Matt Clayes

jbholmes8082@gmail.com

Family

like branches on a tree

we may grow

in different directions

yet our roots remain as

One!

*T*hink of a massive tree that is somewhere on your farm or ranch. I know everyone has a favorite tree which they grew up under, got married beneath, or had a swing attached to. We wanted to dedicate this 16th sale to the roots of many. One is the people with the foresight and took on the challenge of starting a first class sale and put down the roots and to be consistent over the years and watch what was planted grow and develop. Secondly is to breed, purchase, develop and offer your best genetics to customers around the country. This is the 50th Anniversary of the Simmental breed and we want to express all the hard work, time, dedication and investment that many families large and small have made in the Simmental breed over the years. Most of all we want to thank Steve Sanders for his unmatched enthusiasm and leadership. Some of the participants in the Head of the Class have changed over the Years; however the same philosophy that was put in place 15th years ago at the first Head of the Class still is instilled in all the breeders involved today. One thing that we want to express and acknowledge over the years of the sale the roots run deep and the branches have grown and hopefully many programs have flourished because of this genetics improvement. Some of the individuals marketed in the Head of Class have passed generation after generations of strong genetics that are still impacting our breed today.

We want to share some of the history of the Head of Class sale and some of its deepest roots and some of the genetics have impacted the breeders involved and their customers along the way. In the sale in 2005 GCF Miss Caliente R2 was claimed by many to be one of the best. On sale day this tremendous female commanded \$18,750 going to Silver Towne Farms and Harkers Simmentals. Today, Caliente R2 has 158 progeny listed with ASA and one of her best daughters is the two time North American champion, STF Onyx. The roots of that family are deeply rooted and the list continues to grow. In that same sale the Triple Crown champion, SVF Breath Taker sold for \$35,000 going to Anvil Acres in Maryland. On her cow card she has 77 progeny listed to date. In viewing this year's catalog Baby's Breath is represented well with 4 or 5 progeny. One of the most famous and productive daughters of Breath Taker is SS Babys Breath which sold in the 2008 sale for \$18,500 going to Hilbrands Baby Breath has 143 progeny listed with the ASA and her progeny are still some of the most sought after in their annual production sale.

In the 2006 sale C&C Farms selected SS DS Sweet Kisses for \$13,250 and has been very instrumental in their program with 51 progeny reported. Also, that same sale Little Mountain purchased a Breath Taker daughter of \$8,200. In 2007 SS Golden Dream N901 a half sister to Dream On was selected by Sunset View and Wilson

2003 *Class* 2018



GCF Miss Caliente R2



SVF Breath Taker J130



SS Baby's Breath



SS DS Sweet Kisses



SS Golden Dream N901



Rew SS Gracie Babe



Rew Too Cool S365



BCS Lady Luck



SS Empriss T091



Akers Ruby



Amazing Grace



SS Empriss 302Y



KenCo Miley Cottontail



HPF Sazerac 205B

Farms for \$13,000. SS Gracie Babe T914 was purchased by Wesner Livestock for \$9,500 and went on to be a many time champion. After her success as a donor, Gracie Babe returned to the sale in 2014 and commanded \$12,500 from long time sale supporter Nick Sloup. Rew Too Cool S365 was a great buy that year at \$6,250 going to Lazy H in Ohio. She is the grand dam of the Victoria Secret and Shell Shocked. Too Cool's grand dam BSC Lady Luck sold in the 2004 sale going to Sloup Simmentals and has 56 progeny listed with the ASA. Her families' roots extend all over this breed today.

In the 2008 sale along with Baby Breath, the other popular lot was SS Empriss T091 selling to Pine Ridge Farm and Sunset View. T091 has 64 progeny listed with ASA. In 2009 one of the best ever Sim Angus cows, Akers Ruby commanded \$21,000 going to Sloup, Double R and Snider. In the 2010 event, Rew Ms Brenda sold for \$16,750 going to Dillion, 3M and Sanders plus her dam, Amazing Grace sold for \$13,500 going to Seward, Nebraska. Grace has 71 progeny listed with ASA. In the 2011 sale, Hartman Cattle Co. selected a Cottontail pregnancy for \$20,000. SS Empriss 302Y was selected by Hudson Pines Farm for \$10,750 and was one of the crowd favorites and still is today.

2012 highlight was the many time champion and popular donor, Kenco Miley Cottontail. After the dust and excitement slowed down the winning bidder was Bill Sloup at \$45,000. After she sold her son, Tailgater commanded \$21,000 to Dunn Ranch. Cottontail has been highly instrumental for several operations and her progeny still are offered in the sale and many others. Her progeny to date is 103 and growing and her progeny still show up in the show and sale results. Also in 2012, Tingle Farms selected SS SVF Honey Bunz for \$12,000. In the 2013 sale two Cottontail were among the highlights one going to Southern Jewell at \$13,500 and Cotton Puff at \$11,250 going to Bill Sloup. Longtime faithful supporter, Ed Rule owner of Shoal Creek selected SS PRS Daisy Lynn for \$10,000. In the 2014 sale Cottontail progeny still were at the top of the class selling for \$30,000 going to Hilltop Simmentals and another daughter to Circle M for \$25,000, Cottontail 440A selling for \$21,500 going to Dean Volk, plus Cottontail 17A selling for \$15,000 to Hudson Pines. Fenton selected HPF Sazerac 205B for \$17,500. Another highlight was one selected by Andrew Speas, Foxy Lady for \$14,500 and has several lots in the sale this year.

The 2015 sale was loaded up with highlights and sale was topped by BF I Am Glamour for \$29,000 purchased by long time breeder and customer Ed Rule. WLE Heaven Sent, \$21,500 to Keith Lambright, WLE Crocus \$20,500 to Circle M, HCC Conley Cottontail for \$18,000 to Hillstown, Dandy Kane \$18,000 to Andrew Speas, SS Rachel \$16,500 to Ronnie Smith. That same year HTP Bram 457 C504 was purchased as an open heifer by the Gilbert family for modest price of \$6,250. The show prospect won as an open and as a cow calf pair. This year at the Simmental Breeders Sweepstakes C504 was Supreme Champion overall. 2016 was represented by Right To Love, Sage, Missy and She Glamorous 430W for \$16,000, \$9,000, \$12,500 and \$9,000 for half interest. In 2017 the top class mate was represented by a past sale favorite family, Red Jewell, a daughter sold for \$8,500, Bramlet Beautiful at \$8,000 to Pickerel Farms and Bramlet Crocus for \$7,500 to Shoal Creek.

The roots were started many years ago and the roots continue to grow just like the list of good customers and the success stories. All of the above genetics have already made history and their family tree still continues to grow. Each year many cattle are affordable, dependable and add genetic merit. The Head of the Class is proud of their past however most importantly looks to the future. The group is aware of challenges in the seed stock business and Agriculture; however will continue to do the best of their ability is supplying and standing behind their product Simmental genetics. We welcome you again to join in the hospitality in Louisburg, Kansas.



HS CATCH YOUR BREATH

Lot 1 HS Catch Your Breath

Bramlet Simmentals

Purebred | 3/4/10 | 2536861 | X38U | 77

CNS Dream On L186
HTP SVF In Dew Time
HTP SVF Honeydew
SS Goldmine L42
SS Babys Breath P035
SVF Breath Taker J130

• Open and ready to flush.

XXA Bramlets Breath F825 | 4/5/18 | 3437098 |
F825 | 69 | Heifer | Bramlets Mr Image D611, ASA#3208453

CE	12
BW	0.1
WW	55
YW	68
MCE	6
Milk	23
MWW	51
Marb	0.03
REA	0.47
API	123

Lot 1A Bramlets Breath E744

Bramlet Simmentals

Purebred | 10/30/17 | 3437097 | E744 | 74

Lot 1B Bramlets Breath E748

Bramlet Simmentals

Purebred | 11/2/17 | 3422124 | E748 | 70

Heads Up 20X ET
LLSF Uprising Z925
LLSF Untouchable U925
HTP SVF In Dew Time
HS Catch Your Breath
SS Babys Breath P035

CE	9
BW	1.5
WW	68
YW	95
MCE	5
Milk	20
MWW	54
Marb	0
REA	0.7
API	115



• X38U A own daughter of SS Baby's Breath P035 who commanded \$18,500 in this very ring 10 years ago. Catch Your Breath is a chip off the old block no doubt. We have only scratched the surface of what this female can do. You will see what we are talking about when you see the daughters that will be with her sale day. Two of those are sired by Uprising and Boy what a duo. E744 and E748 They both have what it takes to succeed on any level. E748 made many friends at the Sweepstakes in that tough fall calf division. D641 the bred female of the group is more moderate in her make up but one that appears to have all the pieces it takes for success as she matures into the front pasture kind. Study her sire packed with quite the punch of great ones. We can't forget her coupon on the side F825 that may have out done them all. She is sired by a full sib to the Gilbert female "Bramlets Image D622" that racked in all kinds of purple last year. This little yack haired April baby has the potential to put you on top like the Baby's Breath Family does. Just ask Darrin who helped make him famous many moons ago.

ROOTS SS BABYS BREATH P035



Sold in the 2008 Head of the Class sale for \$18,500 sold to Hillbrands Cattle Co. P035 has 143 progeny registered with ASA.



BRAMLETS BREATH E74



BRAMLETS BREATH E748



BRAMLETS BREATH D641

Lot 1c Bramlets Breath D641

Bramlet Simmentals

Purebred | 12/5/16 | 3437093 | D641 | 70

LMF Movin Forward
CNN Movin Up 403B
CRR She's So Pretty Y631
HTP SVF In Dew Time
HS Catch Your Breath
SS Babys Breath P035

• **Bred AI** CNS/HFS Payload A330, ASA#2747228 on 2/1/18

CE	10
BW	1.2
WW	58
YW	81
MCE	5
Milk	22
MWW	52
Marb	0.03
REA	0.65
API	119

DANDY KANE FAMILY



SS/DS DANDY KANE Y9S3

Sold in the 2015 Head of the Class sale \$18,000 to Andrew Speas. Dandy Kane has 20 progeny listed with ASA



Lot 2A SFIS Faye

Speas Farms Inc.

3/4 Blood | 2/24/18 | 3429090 | F7 |

Mr HOC Broker
SVF Steel Force S701
JM BF H25
B C Lookout 7024
SS/DS Dandy Kane Y9S3
Dillons K217 Ms Kandy

CE 7
BW 2
WW 60
YW 86
MCE 0
Milk 19
MWW 49
Marb -0.11
REA 0.57
API 89

• This 3/4 blood strip faced Broker daughter is a belly dragger to say the least, SFIS FAYE is a powerful well structured female that has what it takes to make a great cow when you are done showing. Great disposition and show ready.

Lot 2B SFIS Felicity

Speas Farms Inc.

3/4 Blood | 3/29/18 | 3429092 | F9 |

TL Bottomline
WS Pilgrim H182U
Miss Star Above
B C Lookout 7024
SS/DS Dandy Kane Y9S3
Dillons K217 Ms Kandy

CE 11
BW 1.1
WW 60
YW 86
MCE 4
Milk 19
MWW 49
Marb 0.06
REA 0.52
API 106

• Felicity is one of my first TL Bottomline calves to hit the ground, and after watching this heifer come along I am planning on using him again. Great temperament and show ready. Her mother was a consistent producer in our donor pen and is now owned by Sloup Simmentals. Big middle and great on the move.



SFIS ELIZABETH

Lot 3 SFIS Elizabeth

Speas Farms Inc.

3/4 Blood | 2/5/17 | 3274246 | E13 | 81

WS Pilgrim H182U
CNS Dream On L186
WS Marla 276M
B C Lookout 7024
SS/DS Dandy Kane Y9S3
Dillons K217 Ms Kandy

CE 12
BW 1.3
WW 59
YW 80
MCE 4
Milk 21
MWW 50
Marb 0.13
REA 0.57
API 109

• Productive cow families are the key to this business and this Heifers mother has been consistently making great females. This Pilgrim daughter has a huge middle and built for longevity. SFIS Elizabeth has a great disposition and great set of EPDs. Calve her out and let her make you money year after year. Safe AI to the 2x National Western champion Pay The Price. NO BULL EXPOSURE

• Bred AI SC Pay the Price C11, ASA#2988788 on 5/26/18



SS/PRS COTTONTAIL 086Z - REFERENCE DAM



KENCO MILEY COTTONTAIL

Sold in the 2008 Head of the Class sale for \$45,000 going to Bill Sloup, Sloup Simmentals and her son SS Tailgator sold for \$21,000 going to Dunn Ranches. Cottontail has 103 progeny listed with ASA.

SS/PRS Cottontail 086Z

CNS Dream On L186
WLE Uno Mas X549
Shawnee Miss 770P
GWS Ebony's Trademark 6N
KenCo Miley Cottontail
JM Dice H25 L24

Sanders Ranch, LLC.

Lot 5A HILB Oracle Emb

3 HEIFER Embryos Guaranteeing 1 Pregnancy

CE 11 | BW 0.8 | WW 65 | YW 91 | MCE 5 | Milk 22 | MWW 55
| Marb 0.08 | REA 0.80 | API 124

Lot 4A HILB Oracle C033R Preg

Sanders Ranch, LLC.

Pregnancy | Due: 9/1/18

CE 11 | BW 0.8 | WW 65 | YW 91 | MCE 5 | Milk 22 | MWW 55
| Marb 0.08 | REA 0.8 | API 124

- Due 9/1/18 to Commercial Black Recip, due by Sale Day

Lot 5B W/C Relentless Emb

Sanders Ranch, LLC.

3 HEIFER Embryos Guaranteeing 1 Pregnancy

CE 10 | BW 1.8 | WW 65 | YW 83 | MCE 2 | Milk 18 | MWW 51
| Marb 0.23 | REA 0.76 | API 129

Lot 4B W/C Relentless 32C Preg

Sanders Ranch, LLC.

Pregnancy | Due: 9/13/18

CE 10 | BW 1.8 | WW 65 | YW 83 | MCE 2 | Milk 18 | MWW 51
| Marb 0.23 | REA 0.76 | API 129

- Due 9/13/18 to Commercial Black Recip, due by Sale Day

Lot 5C CDI Innovator Emb

Sanders Ranch, LLC.

3 Embryos Guaranteeing 1 Pregnancy

CE 13 | BW 0.2 | WW 65 | YW 89 | MCE 4 | Milk 19 | MWW 52
| Marb 0.19 | REA 0.66 | API 134

- One of the best members of the Cottontail cow family 086Z is starting to make her mark and you can get in the ground floor! We could write a novel on all the Cottontail cow family and how they have gone on to the industries best herds and have excelled but their are just too many to name! We are selling two heifer pregnancies that should be on the ground by sale day, one by the Badger Creek/Hillbrand super baldy "Oracle" and the other by the now well proven sire of champions "Relentless". Also selling are full sib "heifer" embryos by those two sires and 3 eggs by the bull that took Denver by storm, CDI Innovator. All these matings by this Wonderful and Powerful cow are sure to put the owners in the driver seat for the foreseeable future!



BF MISS RELENT 430W 1

Lot 6A BF Miss Relent 430W 1

BF Black Simmentals

Purebred | 1/1/18 | 3428895 | F758 |

Yardley Utah Y361
W/C Relentless 32C
Miss Werning KP 8543U
SVF Steel Force S701
KenCo Glamorous 430W
SAFN Shes Glamorous

CE 9
BW 2.6
WW 65
YW 85
MCE 2
Milk 17
MWW 50
Marb 0.01
REA 0.81
API 112

• If I ever wise up and keep a KenCo Glamorous 430W daughter as a future donor and replacement for 430W herself, this is the one I should keep! W/C Relentless 32C knocked one out of the park with this donor quality female. My hope is that she finds a good home, gets shown to her potential and becomes a breeding piece for a progressive program. I won't try to describe her attributes, but just ask you to trust, she's got the goods.



BF MISS CLASSY GLAMOUR F24

Lot 6B BF Miss Classy Glamour F24

BF Black Simmentals

Purebred | 1/20/18 | 3424447 | F24 |

Mr TR Hammer 308A ET
TKCC Classified
Ford RJ Dolly Y83
SVF Steel Force S701
KenCo Glamorous 430W
SAFN Shes Glamorous

CE 8
BW 2.4
WW 74
YW 111
MCE 3
Milk 19
MWW 56
Marb -0.02
REA 0.85
API 115

• Here is a Classified x 430W daughter that has had her share of interest as folks drop by. Not as fancy fronted, but a lot of cow prospect in this one. Nice set of numbers to work with in future breeding choices.

Lot 6c BF Miss HI Cal 430W F92

BF Black Simmentals

Purebred | 2/15/18 | 3424449 | F92 |

MCM Top Grade 018X
TJ High Calibre 556B
 PRS Lady Done Right W214
 SVF Steel Force S701
KenCo Glamorous 430W
 SAFN Shes Glamorous

CE	12
BW	1.4
WW	75
YW	113
MCE	6
Milk	20
MWW	57
Marb	-0.02
REA	0.79
API	122

• Now the High Calibre x 430W female that has caught my eye from early on. She is long sided, long beaked, good structured and very attractive. Has the best calving ease, weaning and yearling EPDS along with API of the Glamorous 430 W daughters.



Lot 7A BF RAH Elegance 124E

BF Black Simmentals

Purebred | 1/24/17 | 3346301 | 124E |

STF Dominance T171
Harkers/JS Domination
 GCF Miss Calente
 SVF Steel Force S701
KenCo Glamorous 430W
 SAFN Shes Glamorous

CE	7
BW	4
WW	55
YW	78
MCE	1
Milk	16
MWW	43
Marb	-0.18
REA	0.49
API	90

• KenCo Glamorous has never disappointed us in all the different ways we have bred her. This Harkers/JS Domination female is very nice. She's feminine, deep middled and has the prettiest head and face. We have her bred to the 2018 Fort Worth Grand Champion bull "GSC GCCO Dew North 102C".

• **Bred AI** GSC GCCO Dew North 102C, ASA#3141837 on 5/5/18



Lot 7B BF Miss IM 430 W E61

BF Black Simmentals

Purebred | 3/8/17 | 3265204 | E61 | 75

W/C No Remorse 763Y
W/C BF Innocent Man
 Miss Werning 174Y
 SVF Steel Force S701
KenCo Glamorous 430W
 SAFN Shes Glamorous

CE	11
BW	0.9
WW	55
YW	79
MCE	4
Milk	22
MWW	50
Marb	-0.02
REA	0.84
API	110

• We have had great success with the 430W WC/BF Innocent Man heifers in past Head of the Class Sales. This one is moderate, efficient, functional in every way, and ready to produce dollars for your program. She is bred up for an early February calf to the Nate Ruby produced, Hartman High selling "Ruby's Currency 7134 E bull".

• **Bred AI** Ruby's Currency 7134W, ASA#3282185 on 5/1/18



KENCO GLAMOROUS 430W

Sold in the 2008 Head of the Class sale for \$9,000 for 1/2 interest.. 430W has 21 progeny listed with ASA.



LONGS FOXY LADY FAMILY

LONG'S FOXY LADY



Sold in the
2014 Head of
the Class sale
for \$14,500
sold to
Speas Farms,
Inc.



SFIS ELLIE

Lot 8 SFIS Ellie

Speas Farms Inc.

SimAngus	4/3/17	3274255	E22	65	CE	10
					BW	1.7
		O C C Legend 616L			WW	62
B C Lookout 7024					YW	90
		Gibbet Hill Mignonne E37			MCE	2
					Milk	16
		SVF Steel Force S701			MWW	47
Long's Foxy Lady					Marb	0.15
		Long's Miss Sweets			REA	0.61
					API	110

- SFIS Ellie is a power packed, ultra feminine 1/2 blood daughter of Long's Foxy Lady who has been an extremely consistent producer for us year after year and I expect this BC Lookout daughter to do the same for you. Extremely striking on the profile and moves with ease and grace. Safe AI to the 2x National Western Champion Pay The Price and NO BULL EXPOSURE
- Bred AI** to SC Pay the Price C11, ASA#2988788 on 5/15/18



SFIS FARRAH



SFIS FRANCINE

Lot 9A SFIS Farrah

Speas Farms Inc.

Purebred	4/2/18	3429093	F10	CE	9
				BW	2.4
		SS/PRS High Voltage 244X		WW	65
LLSF/VLF Reactor A40				YW	93
		LLSF Cayenne UP401		MCE	3
				Milk	20
		SVF Steel Force S701		MWW	53
Long's Foxy Lady				Marb	-0.11
		Long's Miss Sweets		REA	0.88
				API	109

- This purebred Reactor heifer carries a lot of her mother's traits, bone, structure, great hair and a great foot that should help this girl produce year after year just like her mother. Show broke and ready for any level of show experience. Be sure to check SFIS Farrah out on sale day.

Lot 9B SFIS Francine

Speas Farms Inc.

Purebred	4/4/18	3429094	F11	CE	9
				BW	2.4
		SS/PRS High Voltage 244X		WW	65
LLSF/VLF Reactor A40				YW	93
		LLSF Cayenne UP401		MCE	3
				Milk	20
		SVF Steel Force S701		MWW	53
Long's Foxy Lady				Marb	-0.11
		Long's Miss Sweets		REA	0.88
				API	109

- Purebred with a lot of potential, show her or just take her home and grow her out, I'm not sure I have raised a heifer that is so sound and soft on her hind legs, great on the move. If you are looking for a female to make some tremendous purebred Simmental seedstock look no further.



BRAMLET BEAUTIFUL A325

Sold in the 2017 Head of the Class sale for \$8,000 sold to Dr Troy Pickarel

- D636 is a full sib to the Lot 1 cow last year that commanded much respect for her overall power and structural integrity being selected by Troy Pickarel of Georgia for \$8,000 to add to his donor line up. We feel this female doesn't hold anything back. Bred up early to CNS/HFS Payload- a can't miss female in the making.

- **Bred AI** CNS/HFS Payload A330, ASA#2747228 on 12/8/17



BRAMLETS BEAUTIFUL D636

CE	6
BW	2.5
WW	76
YW	127
MCE	-2
Milk	19
MWW	57
Marb	0.08
REA	0.85
API	104

Rito 707 Of Ideal 3407 7075

S A V Resource 1441

S A V Blackcap May 4136

SHS Navigator N2B

HPF Ms Beautiful S054

SVF Sheza Classic N905

Lot 10A Bramlets Beautiful D636

SimAngus | 9/12/16 | 3437091 | D636 | 70



BRAMLETS BEAUTIFUL E721



BRAMLETS BEAUTIFUL E729

Lot 10B Bramlets Beautiful E721

Bramlet Simmentals

Purebred | 2/27/17 | 3437090 | E721 | 70

Mr NLC Upgrade U8676
Sandeep Upper Class 2386

Sandeep Donna 7386

SHS Navigator N2B

HPF Ms Beautiful S054

SVF Sheza Classic N905

CE	8
BW	2.7
WW	67
YW	102
MCE	0
Milk	20
MWW	53
Marb	-0.06
REA	0.96
API	111

- E721 being the eye catching baldy of the group has loads of potential to add pounds and power to your program for years to come. Bred up for an early calf to the calving ease specialist Executive Order.

- **Bred AI** W/C Executive Order 8543B, ASA#2900283 on 3/14/18

Lot 10C Bramlets Beautiful E729

Bramlet Simmentals

Purebred | 2/12/17 | 3437089 | E729 | 68

SS Ebonys Grandmaster
TNGL Grand Fortune Z467

AJE/HS/MBCC Hope Floats

SHS Navigator N2B

HPF Ms Beautiful S054

SVF Sheza Classic N905

CE	7
BW	2.2
WW	66
YW	100
MCE	2
Milk	21
MWW	54
Marb	-0.15
REA	0.81
API	112

- E729 also had a full sib through this very ring a few years back which ended up staying in Louisburg, Kansas running those wide open pastures at Sanders Ranch. A full brother HPF/Bram Grand Central who was a top seller in the HPF Bull Sale now covering the pastures as top herd sire at Ryan Cattle Company of Illinois. You have to appreciate this female for her perfect foot and leg structure with the added power and overall balance that the beautiful cow family is stamped with. Sells bred to the TWO-TIME Denver Champion "Pay the Price"

- **Bred AI** SC Pay the Price C11, ASA#2988788 on 4/23/18

BRAM LUCY Y001 FAMILY



HPF BRAM LUCY Y001



BRAMLETS/HFS LUCY D640

Lot 11 HPF Bram Lucy Y001

Bramlet Simmentals & Haefner Cattle Co.

SimAngus | 1/1/11 | 2584903 | Y001 | 72

N BAR Emulation EXT
Leachman Saugahatchee 3000C
Leachman B C 7100

HPF Mr Bottomline 808K
HPF Queen Lucy N092

BCS Queen of Hearts

• **Bred AI** CNS/HFS Payload A330, ASA#2747228 on
1/20/18

CE	7
BW	1
WW	51
YW	77
MCE	3
Milk	22
MWW	47
Marb	0.09
REA	0.47
API	98

Lot 11A Bramlets/HFS Lucy D640

Bramlet Simmentals & Haefner Cattle Co.

3/4 Blood | 11/15/16 | 3437092 | D640 | 66

Remington Lock N Load 54U
W/C Bullseye 3046A
Miss Werning KP 8543U
Leachman Saugahatchee 3000C
HPF Bram Lucy Y001
HPF Queens Lucy N092

• **Bred AI** CNS/HFS Payload A330, ASA#2747228 on
1/20/18

CE	13
BW	-1.4
WW	52
YW	78
MCE	5
Milk	22
MWW	48
Marb	0.02
REA	0.81
API	112

• Y001, D640, D637, and D656 – This maybe one of the hardest females to let go of. The Lucy Cow Family has brought me personally much success through the years in this business and helped me get to this point today. Y001 brought us much joy as she was my sisters' last Jr. Heifer being slapped Champion % female at the 2012 Simmental Sweepstakes. After that she hit the Donor Pen and did it with style. We never really shared many daughters through the years but when we did they commanded top dollar with an average of \$8,750 per head. We have several daughters that will impact our program for years to come. These 3 females will impact yours- D637, D640, D656. When you make the drive to Sanders Ranch in September you will see what we are talking about when you lay your eyes on the Y001 female and the trio of 'baldy' daughters that are ready to hit the production line. They will pass on the concrete look, structural integrity, and overall balance that the Lucy Cow Family is stamped with. All females are bred up early to CNS HFS Payload for a quick return on your investment.

Lot 1B Bramlets/HFS Lucy D637

Bramlet Simmentals & Haefner Cattle Co.

3/4 Blood | 10/28/16 | 3437095 | D637 | 67

Remington Lock N Load 54U

W/C Bullseye 3046A

Miss Werning KP 8543U

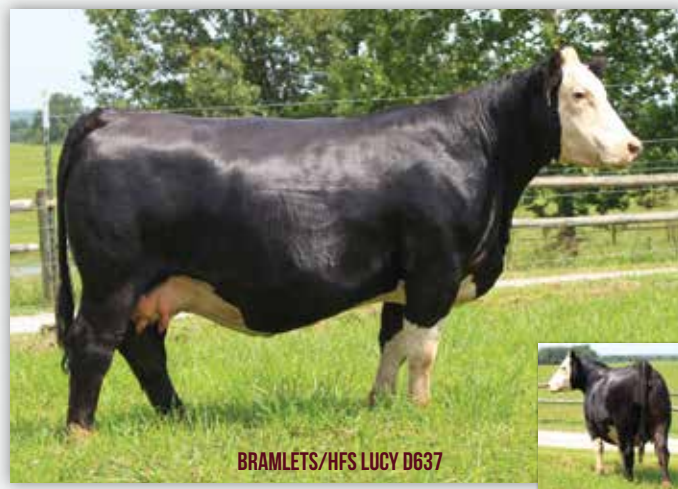
Leachman Saugahatchee 3000C

HPF Bram Lucy Y001

HPF Queens Lucy N092

• **Bred AI** CNS/HFS Payload A330, ASA#2747228 on 12/18/17

CE	13
BW	-1.4
WW	52
YW	78
MCE	5
Milk	22
MWW	48
Marb	0.02
REA	0.81
API	112



BRAMLETS/HFS LUCY D637

Lot 1C Bramlets/HFS Lucy D656

Bramlet Simmentals & Haefner Cattle Co.

3/4 Blood | 10/4/16 | 3437096 | D656 | 72

LLSF Uprising Z925

WS Revival

SS Noreen

Leachman Saugahatchee 3000C

HPF Bram Lucy Y001

HPF Queens Lucy N092

• **Bred AI** CNS/HFS Payload A330, ASA#2747228 on 12/18/17

CE	9
BW	0.7
WW	62
YW	91
MCE	4
Milk	21
MWW	52
Marb	0
REA	0.65
API	104



BRAMLETS/HFS LUCY D656



BRAMLETS SENSATION F800

Lot 12 Bramlets Sensation F800

Bramlet Simmentals

SimAngus | 1/4/18 | 3422125 | F800 | 69

Dameron First Class

Colburn Primo 5153

Silveiras Saras Dream 1339

JF Milestone 999W

HPF Sensation 202C

CLO Sweet Sensation 704R

CE	10
BW	2.3
WW	73
YW	109
MCE	5
Milk	16
MWW	52
Marb	0.1
REA	0.39
API	108

• Primo females are no stranger to the backdrop. Winning all over the country in multiple breeds represented, we feel F800 has what it takes to run with the big dogs. With her overall impeccable structure and chiseled front 1/3 and a shot of white on her head, this girl's future is endless. Just ask TJ Williams of Rolling Rock Ranch who selected her maternal sib last year as a top end open. Well worth the drive to Louisburg.



WLE MISSY E855

Wesner Livestock

Lot 14 WLE Missy E855

Purebred | 3/5/17 | 3440402 | E855 | 71

S D S Graduate 006X
CCR Wide Range 9005A
 CCR Ms Apple 9332W
 BAR CK Dominator B226T
WLE Missy B854
 WLE Missy X854
 • **Bred AI** GSC GCCO Dew North 102C,
 ASA#3141837 on 3/22/18

CE	11
BW	0.5
WW	69
YW	105
MCE	6
Milk	17
MWW	51
Marb	-0.1
REA	0.99
API	120

• Yes Sir, another "Missy"! Here's a genetic gem for your appraisal. This one is a belly dragging, stout featured female with the paper credentials to match. Her mating to the popular GSC GCCO Dew North 102C should sweeten the pot even more. Buy with confidence and let this female put you on the map. Bred 3/22/18 GSC GCCO Dew North-Safe.



WLE MISSY C002

Sold in the 2016 Head of the Class sale for \$12,500 sold to Glacier Cattle Co.



WLE MISSY U409 - REFERENCE GRANDDAM

Lot 14A Shawnee Miss B409 x GSC GCCO Dew North 102C

Lydeon Cattle Co.

3 Embryos Guaranteeing 1 Pregnancy

HTP SVF Duracell T52
GSC GCCO Dew North 102C
 Welsh's Scarlet 161Z
 FBFS Wheel Man 649W
Shawnee Miss B409
 WLE Missy U409

CE	9
BW	1.7
WW	69
YW	95
MCE	4
Milk	13
MWW	47
Marb	-0.12
REA	0.84
API	109

• Offering 3 direct transfer embryos guaranteeing 1 pregnancy if work is performed by a certified embryologist.
 • This cow family is stacked with National Champion genetics. B409 is a daughter of the \$42,000, Shawnee Miss U409 cow, that is a featured donor for Brandon Byrd and a half-sister to the National Champion female Monique and the \$25,000 WLE Missy D020 for half interest female in the 2017 NAILE sale. B409's sire, FBFS Wheel Man 649W, was a National Champion bull and the embryos are sired by another National Champion, Dew North. Pedigrees cannot get more stacked with championship cattle. Buy with confidence.



HPF SHEZA STAR X331 - REFERENCE DAM



SFIS ELSA E64



SFIS EVA E18

Speas Farms Inc.

Lot 15A SFIS Eva

Purebred | 3/25/17 | 3274251 | E18 | 74

Remington Lock N Load 54U
W/C Loaded Up 1119Y
 Aubreys Black Blaze III
 Mr NLC Upgrade U8676
HPF Sheza Star X331
 SVF Sheza Star S803

CE	10
BW	1.5
WW	66
YW	98
MCE	4
Milk	21
MWW	55
Marb	-0.05
REA	1.11
API	116

• SFIS Eva has been a farm favorite since she hit the ground, great structure, big bone and a big foot, I'm not sure where you would want to change her. Eva is as gentle as they come and has first-rate genetics backing her. With very little Dream On in her pedigree there are endless options for matings. Calve her out to the exciting young sire and 2x National Western champion Pay The Price and send her straight to the donor pen. Safe AI and NO BULL EXPOSURE

• **Bred AI** SC Pay the Price C11, ASA#2988788 on 5/8/18

Speas Farms Inc.

Lot 15B SFIS Elsa

Purebred | 3/22/17 | -3429238 | E64 | 78

Remington Lock N Load 54U
W/C Loaded Up 1119Y
 Aubreys Black Blaze III
 Mr NLC Upgrade U8676
HPF Sheza Star X331
 SVF Sheza Star S803

CE	10
BW	1.5
WW	66
YW	98
MCE	4
Milk	21
MWW	55
Marb	-0.05
REA	1.11
API	116

• SFIS Elsa is powerful female with an exciting pedigree, backed with impressive EPDs she should make you money for many years to come. Bred up to the 2018 National Western Percentage Champion Bull CDI Innovator you will have a head start on her paying you back the first year. Safe AI and NO BULL EXPOSURE

• **Bred AI** CDI Innovator, ASA#3152448 on 4/19/18



HPF VICTORIA B396E - MATERNAL SISTER TO LOT 15

2018 Simmental Breeders Sweepstakes Open Show
Grand Champion Female



HTP/BRAM SAZERAC E756 - FULL SISTER TO LOT 16

2018 Simmental Breeders Sweepstakes Open Show
Reserve Grand Champion Female



HPF SAZERAC 205B

Sold in the
2014 Head of
the Class sale
for \$17,500
sold to
Fenton Farms.



HTP/BRAM SAZERAC D644

Lot 16 HPF Victoria 392E

Sanders Ranch, LLC.

Purebred	1/5/17	3270183	392E	89
TKCC Classified	Mr TR Hammer 308A ET	CE	7	
	Ford RJ Dolly Y83	BW	1.9	
	GWS Ebony's Trademark 6N	WW	69	
CLCC Victoria W02	Myers Queen Sazerac P94	YW	101	
		MCE	3	
		Milk	21	
		MWW	56	
		Marb	0.19	
		REA	0.83	
		API	125	

• Here is one with a pedigree that has gained monumental momentum in the last few months. 392E's Maternal sister, HPF Victoria B396E was just named the Grand Champion female at the Simmental Breeders Sweepstakes and earlier this year she won ever prestigious Indiana Beef Congress. Sired by Classified she has a huge foot and dense skeletal make-up. Bred to Relentless to produce a 3/4 sister to the Sweepstakes Grand Heifer! Power in the blood!

• **Bred AI** W/C Relentless, ASA#3045559 on 5/20/18

Lot 17 HTP/Bram Sazerac D644

Bramlet & HTP Simmentals

Purebred	9/14/16	3222887	D644	83
HTP/SVF Duracell T52	CNS Deam On L186	CE	10	
	HTP SVF Honeydew	BW	0.9	
	HC Power Drive 88H	WW	61	
SVF/BT Sazerac Z2	Myers Queen Sazerac P94	YW	89	
		MCE	6	
		Milk	19	
		MWW	50	
		Marb	0.02	
		REA	0.86	
		API	121	

• In our spring online Sweet Divas sale we sold several young fall borns and one of the special ones was a full sister to D644. HTP Bram Sazerac E756 has been a show stopper so far being 7th overall at the North Central regionals, class winner and 3rd in Division at the Jr Nationals and Reserve Grand in the open show at the Simmental Breeders Sweepstakes. We wish the best of Walker Housley and the rest of his team in the future. Sazerac E756 is ahead of Walker's heifer because of age and getting ready to go into production calving to Executive Order. D644 is wide based, bold sprung, deep and broody. The dam is quite impressive and special being a Power Drive out of the one and only Sazerac. Remember to get a front row seat at the Head of the Class.

• **Bred AI** W/C Executive Order 8543B, ASA#2900283 on 1/9/18



BF MISS CLASSY DONNA F69



SANDEEN DONNA 4232- REFERENCE DAM

Lot 18 BF Miss Classy Donna F69

BF Black Simmentals

Lot 19 SFIS Felicia

Speas Farms Inc.

Purebred | 1/2/18 | 3424445 | F69 |

TKCC Classified	Mr TR Hammer 308A ET	CE	5
		BW	1.7
	Ford RJ Dolly Y83	WW	71
		YW	112
Sandeen Donna 4232	Remington Lock N Load 54U	MCE	1
		Milk	20
	Sandeen Donna 8386	MWW	55
		Marb	0.11
		REA	0.98
		API	121

• Our only Classified x Donna 4232 female. Hope you like this black blazed face big bodied, nice fronted heifer. What a bred she will be after a little road time. Full sib embryos sold for \$2,500. She has a brother at home that is a stout dude!! Nice set of numbers to enhance the package. Three Innocent Man maternal brothers average \$5,000 at home. Good genetics in this girl.

Purebred | 3/19/18 | 3429091 | F8 |

Mr HOC Broker	SVF Steel Force S701	CE	5
		BW	2.4
	JM BF H25	WW	63
		YW	96
Sandeen Donna 4325	Remington Lock N Load 54U	MCE	1
		Milk	16
	Sandeen Donna 8386	MWW	48
		Marb	-0.14
		REA	0.72
		API	102

• Red Baldy with a little extra chrome, this Broker daughter didn't have the best recip mother but I expect her to blossom as we get closer to fall. Great structure with a lot of cow power in her lineage, The 4325 cow has raised some great heifers for us and I expect the same from this red daughter.



SFIS FELICIA F8



SANDEEN DONNA 4325- REFERENCE DAM



LLSF ROBINS KISS YS51 - REFERENCE DAM



BF MISS GLORY TANGO E120



BF MOSS MISS TANGO E47Z

Lot 20

BF Black Simmentals
LLSF Robins Kiss YS51 x Ruby's Currency 7134E

5 IVF Embryos Guaranteeing 2 Pregnancies

WBF Significant B132
Ruby's Currency 7134E
Rubys Hill 035X
Mr NLC Upgrade U8676
LLSF Robins Kiss YS51
JBS Rockin Robin R194

CE	12
BW	1.1
WW	74
YW	110
MCE	6
Milk	19
MWW	56
Marb	0.17
REA	0.9
API	135

- Selling 5 IVF Embryos Guaranteeing 2 Pregnancies if work is performed by a certified embryologist.
- The mating we are double excited about, because of the fact of the Robins Kiss donor and Currency. We already know the predictability of Rockin Robin, and Tango and we feel benefit our programs and others as well. We have sold many daughters of Tango and her daughters will be some of our best at the Head of the Class. Currency is not just a high seller he is complete and just plain good. The future of this well bred individual should be exciting to see the future results. Rocking Robin has 84 progeny to her list with two of the famous daughters are LLSF Keepsake a donor for Greenhorn, Hamilton and Wilson Farms plus LLSF URA BabyDoll. The great families carry on.

Lot 21

BF Black Simmentals
BF Miss Glory Tango E120

Purebred | 2/2/17 | 3265187 | E120 | 71

WLE Uno Mas X549
CAJS Blaze of Glory
CAJS Khloe 42ZA
GWS Ebony's Trademark 6N
LLSF Tango T194
JBS Rockin Robin R194

CE	11
BW	0.2
WW	65
YW	90
MCE	3
Milk	17
MWW	50
Marb	0.13
REA	0.42
API	122

- Got to be one of the best Blaze of Glory females around. Out of our Rockin Robin daughter LLSF Tango T194 that has been so successful for us. This one just exploded as a bred. We are so pleased to have her carrying the service of our homo black homo polled top herd sire "SC Pay In Cash C15" the full brother to Pays to Believe, and the two time Denver champion "SC Pay the Price C11". We just call our herd sire "Cash" and he is ready to make his mark with this tremendous female in your herd.

- **Bred AI** SC Pay In Cash C15, ASA#2988789 on 5/12/18

Lot 22

BF Black Simmentals
BF Moss Miss Tango E4Z

3/4 Blood | 2/3/17 | 3310625 | E4Z | 69

W/C No Remorse 763Y
W/C BF Innocent Man
Miss Werning 174Y
GWS Ebony's Trademark 6N
LLSF Tango T194
JBS Rockin Robin R194

CE	10
BW	0.1
WW	53
YW	73
MCE	3
Milk	25
MWW	51
Marb	0.18
REA	0.61
API	106

- If you don't have an Innocent Man female on the place, here would be a good one to start with. Our Innocent Man daughters are moderate framed, easy keeping, good uddered, good milkers, and always good looking! Take a hard look at this one. She does and will as a cow fit the mold. Bred for early January to Mr. CCF 20-20. Calving ease all the way.

- **Bred AI** Mr CCF 20-20, ASA#2964446 on 3/29/18

Lot 23 SFIS/DDM Fancy

Speas Farms Inc.

Purebred | 2/24/18 | -3431961 | F12 | 81

Remington Lock N Load 54U

W/C Bullseye 3046A

Miss Werning KP 8543U

GWS Ebony's Trademark 6N

LLSF Urababydoll U194

JBS Rockin Robin R194

CE	15
BW	-1.4
WW	58
YW	82
MCE	5
Milk	21
MWW	50
Marb	0.07
REA	0.99
API	131

• This heifers name says it all, she is chromed up and defiantly stands out in a crowd, This Bullseye daughter is out of the great cow LLSF Urababydoll who is the mother of Pays to Believe and Pay the Price to name a few. Ready for the show pen.



JBS ROCKIN ROBIN R194 - REFERENCE GRANDDAM



Lot 24 Bramlets Mercedes F809

Bramlet Simmentals

Purebred | 2/16/18 | 3422127 | F809 | 75

Mr TR Hammer 308A ET

TKCC Classified

Ford RJ Dolly Y83

JF Milestone 999W

Bramlets Mercedes A323

Bramlets Mercedes

CE	6
BW	3.7
WW	85
YW	130
MCE	2
Milk	20
MWW	62
Marb	0.06
REA	0.85
API	118

• A powerfully constructed female sired by the \$70,000 cattle visions stud Classified. One you have to appreciate for her overall power and substance. This heart shaped baldy female has all the contributing factors to earn the purple. Kid friendly and ready to hit the show road.



BRAMLETS MERCEDES F809

Lot 25 SS Dottie D342

Bramlet Simmentals

Purebred | 12/15/16 | 3289315 | D342 | 83

MCM Top Grade 018X

Hook's Broadway 11B

Hook's Water Lily 89W

SVF Steel Force S701

HTP/SVF Sage X342

Bramlets Sacajalia

CE	7
BW	2.3
WW	68
YW	103
MCE	4
Milk	19
MWW	53
Marb	-0.01
REA	0.83
API	115

• This Broadway female is no stranger to the Head of the Class sale. Her dam plus two have been through this very ring and commanded much attention with an average of \$10,000 per head. These females reside at Sloup Simmentals, Shoal Creek, and Paradise Farm. D342 has the look and the much needed traits to continue her family legacy.

• Bred AI CDI Innovator 325D, ASA#3152448 on 4/26/18



SS DOTTIE D342



Lot 26A BF Miss Nebraska F66

Purebred | 3/1/18 | 3419671 | F66 |

BF Black Simmentals

Lot 26B BF Miss Serena Load F466

Purebred | 2/7/18 | 3419674 | F466 |

BF Black Simmentals

Lot 26c BF Miss Serena Load F5

Purebred | 2/17/18 | 3419675 | F5 |

Bf Black Simmentals

for your evaluation. Pick and choose of these gorgeous heifers. All three could be show heifers. Super eye appeal and sound structured. F66 Miss Nebraska out grew her siblings even being the youngest. F5 is a lot like Miss Nebraska maybe even a little more zipper fronted neck. F446 is a bit more compact, good shape and top, also the most docile calf we have ever had on halter. We like all and will let you decide.

Remington Lock N Load 54U
W/C Loaded Up 1119Y
Aubreys Black Blaze III
LLSF Pays To Believe ZU194
CLRWTR Serena C74L
HF Serena

CE	10
BW	1.6
WW	64
YW	92
MCE	4
Milk	19
MWW	51
Marb	-0.05
REA	1.01
API	115

- We purchased the flush rights to "CLRWTR Serena C74L" at the 2016 NAILE. "Breez" as she was nicknamed was beautifully displayed, packing credentials from the AJSA National Classic and the Indiana State Fair. We flushed her to "W/C Loaded Up" and have brought three daughters to the Head of the Class Sale



Lot 27 CNS/HFS Alley E420

Schick/Haefner Cattle Company

Purebred	10/21/17	3400896	E420	76
RGRS SRG Two Step 20Z ET				CE 11
CNS-GVC Blackstar 511C				BW 1.5
GVC Blackstar				WW 65
				YW 92
RGRS SRG Two Step 20Z ET				MCE 5
HPF/AF/B&K/Alley C420				Milk 19
WHF/PRS/HPF Alley 247Y				MWW 52
				Marb 0.04
				REA 0.71
				API 125

- We are truly honored to be a part of this years Head of the Class and know very well the reputation for this event that Sanders Ranch and their team have spent years building. They have dedicated themselves to offering elite level cattle that go on to not only win in the showing but make top tier donors that have long term impact on the breed. We offer E420 for your appraisal because we believe she is a female of that caliber. Flawless in her outline, unique in her build, and pliable in motion, purebreds like E420 do not come along every day. Backed by breed dominant females BlackStar 307Y and Alley 247Y, E420 is as strong genetically as she is on foot. E420 already has an impressive resume started, being named 4th Overall Bred and Owned at Junior Nationals, Division Champion

at Sweepstakes, and most recently Reserve Grand Female at The Illinois State Fair. Bid with confidence, even brighter days lay ahead for this female. Schick Haefner Cattle reserves the right to one flush with a minimum of 6 transferable embryos to be done at the buyers convenience within two years of sale date and at the sellers expense.

Lot 28 HPF Alley 413E

Sanders Ranch, LLC.

Purebred	2/13/17	3268830	413E	79
Mr CCF Vision				CE 12
Mr CCF 20-20				BW 1.4
HTP SVF Dew The Stroke				WW 72
JF Milestone 999W				YW 106
WHF/PRS/HPF Alley 247Y				MCE 7
WHF Sierra 245S				Milk 20
				MWW 56
				Marb -0.09
				REA 1.04
				API 120

- Raising ET calves for Hudson Pines, we had the pleasure to see a lot of progeny out of a elite donor program over the years and no progeny excelled more than the 247Y's. Alley was the top selling donor in the HPF dispersion for a reason, the progeny out of her has always excelled! 413E is no different! Invest in a cow family that is as good as it gets!

- Bred AI** W/C Relentless, ASA#3045559 on 6/10/18



WHF/PRS/HPF ALLEY 247Y - REFERENCE DAM

Lot 29A SFIS Fiona

Speas Farms Inc.



SFIS FIONA

3/4 Blood | 2/26/18 | 3429089 | F6 |

WS Revival	LLSF Uprising Z925	CE	11
	SS Noreen	BW	-0.2
SFIS C10	SVF Steel Force S701	WW	62
	Finleys Queen Mother 0364	YW	90
		MCE	5
		Milk	18
		MWW	49
		Marb	-0.06
		REA	0.73
		API	101

• This Revival heifer is pretty striking, long fronted, big bellied and sound to the ground. Fiona also has some chrome to help her stand out in the show ring. Her mother SFIS C10 is a great flusher and producer so I expect this heifer to do the same when you are done showing her. Kid Broke

Lot 29B SFIS Faith

Speas Farms Inc.



SFIS C10 - REFERENCE DAM

3/4 Blood | 3/17/18 | 3429088 | F5 |

WS Revival	LLSF Uprising Z925	CE	11
	SS Noreen	BW	-0.2
SFIS C10	SVF Steel Force S701	WW	62
	Finleys Queen Mother 0364	YW	90
		MCE	5
		Milk	18
		MWW	49
		Marb	-0.06
		REA	0.73
		API	101

• Here is another Revival daughter that continues to impress me everyday, long fronted, good shouldered and deep bellied. She has great hair and a good attitude. Beyond the show ring this heifer has a versatile pedigree that can produce purebred or percentage Simmentals.



SFIS FAITH



W/C MISS WERNING 5016C - REFERENCE DAM

BF Black Simmentals

Lot 30A&B W/C Miss Werning 5016C Embryos

5 Embryos Guaranteeing 2 Pregnancies

Yardley High Regard W242

W/C No Remorse 763Y

DW Susanna 763T

WAGR Dream Catcher 03R

Miss Werning 174Y

Miss Werning 534R

30A LLSF Pays to Believe Proj. EPDs CE 8 | BW 0.8 | WW 57 | YW 77
MCE 3 | Milk 20 | MWW 49 | Marb 0.18 | REA 0.72 | API 116

30B W/C Fully Loaded Proj. EPDs CE 11 | BW -0.5 | WW 51 | YW 69 |
MCE 4 | Milk 26 | MWW 52 | Marb 0.13 | REA 0.86 | API 125

- Selling 5 embryos guaranteeing 2 pregnancies if work is performed by a certified embryologist.
- Well, Bill Sloup and I are still excited about the future of this No Remorse donor. This female is exciting to watch as she matures into a young cow and see the offspring and decide what to flush her to next. We sold the first embryos ever in last year's Head of the Class going to KenCo Cattle Co and Micheal Benda. The mating of Pays To Believe will make history no doubt. The W/C Fully Loaded calves are on the ground and quite impressive. Of course he is the full brother to the high selling Bankroll. The Head of the Class has been going on for many years so don't overlook the genetics that come out of this sale each year. These genetics will make the year book of memories.



WLE CROCUS U56 - REF DAM



DAUGHTER BY PAYS TO BELIEVE
SOLD FOR \$10,000



MEADOW SPRINGS CROCUS

Lot 31 Meadow Springs Crocus

Wesner Livestock/Courtney Wesner

3/4 Blood | 3/19/14 | 2923096 | 481B | 73

	CNS Dream On L186	CE	13
WLE Uno Mas X549		BW	0.1
	Shawnee Miss 770P	WW	62
		YW	87
	B C Matrix 4132	MCE	5
WLE Crocus U56		Milk	20
	ETR MS Black Crocus L105	MWW	51
		Marb	0.18
		REA	0.46
		API	133

• When we put 481B in the replacement pen as an open heifer we had very high expectations for her. As a two-year-old, she produced a \$10,000, Pays to Believe heifer calf that sold through this very sale ring; shattering those high expectations right out of the gate. 481 comes to you in the prime of her production life; backed by the maternal generating giants U56 and 770P. Her phenotype speaks for itself; she looks a whole lot like U56 but in a more versatile, solid black, 3/4 blood package. This lends her perfectly towards making "next-level" purebreds or hellacious percentage building blocks, and it is with the utmost confidence that we say she needs taken straight to the donor pen after calving; with that, we went ahead and qualified her as a Donor Dam for you at ASA. Bred back to P2B, confirmed safe with a heifer calf pregnancy, this package is a sure-fire return on investment and an exciting addition to any program. Seller retains the right to one future flush at the seller's expense and buyer's convenience.

• **Bred AI** LLSF Pays to Believe ZU194, ASA#2659897 on 6/7/18

Lot 32 CGW/HVW Moving Up F481

Wesner Livestock/Courtney Wesner

PB Bull | 3/15/18 | 3432373 | F81 | 75

	Remington Lock N Load 54U	CE	13
W/C Loaded Up 1119Y		BW	0.5
	Aubreys Black Blaze III	WW	63
		YW	89
	WLE Uno Mas X549	MCE	6
Meadow Springs Crocus		Milk	19
	WLE Crocus U56	MWW	50
		Marb	0.04
		REA	0.74
		API	134

• If you are looking for a way to interject breed leading genetics, extra quality, and marketability into your calf crop without having to run every cow on the property through the A.I. chute; evaluating, buying, and developing this young herdsire would be a good place to start. The buyer has a distinct advantage in cow/calf pair selling situations; all you need is a buyers' number and the time and patience to watch your investment grow.



CGW/HVW MOVING UP F481



CGW/HVW CROCUS F212



ETR MS BLACK CROCUS L105 - REFERENCE GRANDDAM



GSC GCCO DEW NORTH 102 - REFERENCE SIRE

ROOTS
WLE CROUS U56

DVAuction Broadcasting Real-time Auctions

Lot 33 **CGW/HVW Crocus F212**

Wesner Livestock/Courtney Wesner

3/4 Blood | 3/6/18 | 3437240 | F212 | 71

HTP/SVF Duracell T52
HPF Quantum Leap Z952
RP/MP Right To Love 015U

B C Matrix 4132
WLE Crocus U56
ETR MS Black Crocus L105

CE 12
BW 0.9
WW 68
YW 99
MCE 6
Milk 20
MWW 53
Marb 0.03
REA 0.7
API 119

• If you believe in the power of cow families and are looking to stouten up your replacement pen and wallet, F212 can take you there. It has been proven, time and time again, that the direct U56 daughters are making tremendous brood cows with herd building traits. This female looks to be cut from the exact same cloth. She too, is smooth made, easy fleshing, sound structured, and perfect uddered with endless mating potential and generating possibilities. U56 descendants are later maturing cattle; cattle that get cleaner fronted, stouter, and more valuable with time. I wish I had a weanling photo of her maternal-sister, 481B, selling above; the similarities would be scary and I might be up a couple thousand on the lucky buyers. I shouldn't be selling this kind, so pick up. Halter broke to make a competitive youth project before a brood cow if you so choose.

Lot 34 **Shawnee Miss 105T x GSC GCCO Dew North 102**

Lydeon Cattle Co

3 Embryos Guaranteeing 1 Pregnancy

HTP SVF Duracell T52
GSC GCCO Dew North 102C
Welsh's Scarlet 161Z
CNS Dream On L186
Shawnee Miss 105T
ETR Ms Black Crocus L105

CE 11
BW 0.9
WW 67
YW 92
MCE 7
Milk 16
MWW 49
Marb -0.15
REA 0.99
API 113

• Offering 3 direct transfer embryos Guaranteeing 1 Pregnancy if work is performed by a certified embryologist.
• This Crocus cow family needs no introduction. The daughters of the CNS Dream On L186 x ETR Ms Black Crocus L105 are consistent producers of high quality cattle. WLE sold a full sister to 105T, WLE Crocus S105 for \$20,000 at the Simmental Sweepstakes sale and several progeny of this cow family have demanded serious attention. Embryos sired by Dew North should only add to the solid cow family and be a rock solid investment for any operation.



Sold in the 2015 Head of the Class sale for \$20,500 to Circle M Simmentals.



HPF/PCC BUTTERFLY 516E

Lot 35 Sanders Ranch, LLC./Grady Barbour HPF/PCCC Butterfly 516E

Purebred | 9/5/17 | 3373285 | 516E | 75

WS A Step Up X27
RGRS SRG Tqo Step 20Z ET
WLTR Lydia 39U ET

LLSF Uprising Z925
HILB/RUBY Butterfly B555
JSF Firefly W46

CE	8
BW	2.1
WW	66
YW	94
MCE	3
Milk	16
MWW	49
Marb	0
REA	0.67
API	112

- I'm going to steal a line from the judge who used 516E last month when Grady was showing her to Supreme All Breed Champion, "this one is cooler than the underside of your pillow"! He obviously hasn't been the only one that has fallen for this fall beauty. We have said over the last 16 years of our sale, we don't sell many fall opens unless they are darn good, well ladies and gentleman, this one is a damn good one! Phenotypically she's as big bellied, big legged and big hipped as you would ever want, and on the move she can right the book on how one is supposed to look when set in motion! There is no doubt about how she excels physically, but its how she excels genetically that really gets us fired up! Her Sire and Dam were both two of the best animals that ever walked at the historic Hudson Pines Farm in NY, and with both of them now deceased you can't create another 516E. We are certain this female will make her mark on the tanbark and the seedstock industry! Seller retains the right to 1 flush resulting in at least 6 transferable eggs at our cost and your convenience.



HILB/RUBY BUTTERFLY B555 - REFERENCE DAM



CNS/HFS MISS F333

Lot 36

Schick Haefner Cattle Company

CNS/HFS Miss F333

Purebred | 1/3/18 | 3437045 | F333 | 73

HTP/SVF Duracell T52	CE	10
HPF Right To Love C436	BW	1.1
RP/MP Right To Love 015U	WW	64
	YW	89
WLE Uno Mas X549	MCE	4
CNS Cutie	Milk	18
CNS Aurora T760	MWW	50
	Marb	0.13
	REA	0.56
	API	125

• This January calf should have her fair share of friends on sale day. She is a long spined, long necked individual that still offers ample rib shape and softness. She travels with an extreme amount of flex and agility while balancing up well and giving you "the look" required to be competitive in today's show ring. F333 is sired by a full brother to HPF Quantum Leap and as we get more of his calves on the ground, we continue to see the qualities of Right to Love 015U that made her so famous being passed down in each and every one of them.

Lot 37

BF Black Simmentals

BF Miss Lela 20 20

Purebred | 1/12/18 | 3424444 | F64 |

Mr CCF Vision	CE	14
Mr CCF 20-20	BW	-0.5
HTP SVF Dew The Stroke	WW	67
W/C Executive Order 8543B	YW	101
HSF Lela D635	MCE	7
HSF Hannah Montana T771	Milk	25
	MWW	58
	Marb	0.03
	REA	1.01
	API	130

• We purchased the dam of this stout 20-20 heifer from Hecksels in the Jewels of the Northland, and she is a jewel. This 20-20 female is so much like her EO Hannash Montana dam. Moderate, big bodied, good bone, foot and structure. Don't know how one can be so good and do so good on a young 1st calf heifer. Momma will be flushed after her next 20-20 baby. Tremendous EPD spread in this calf and it is actual.



BF MISS LELA 20 20

Lot 38 BF Miss Cash Out F10

BF Black Simmentals

SimAngus | 2/2/18 | 3424451 | F10 |

SC Pay In Cash C15
CNS Pays To Dream T759
LLSF Urababydoll U194

6428

• Here is our only half blood this year in the Head of the Class opens and the only "SC Pay In Cash"! She should help promote her sire. Her dam is a powerful BC Lookout PB Angus Cow not on file, but that is what she is. "BF Miss Cash Out F10" is going to the NE State Fair percentage show.

CE	11
BW	0.8
WW	59
YW	87
MCE	6
Milk	19
MWW	65
Marb	0.26
REA	0.55
API	112



BF MISS CASH OUT F10

Lot 39 BF Miss Valarie F170

BF Black Simmentals

Purebred | 2/9/18 | 3424448 | F170 |

TL Bottomline
WS Pilgrim H182U
Miss Star Above
SVF Steel Force S701
ZKCC Valerie 20X
Rodrock Ms Blk Bear 31N

• I just have to call this one cute! Would not mind if she was a tick bigger, but she is neat as can be made. She has turned some heads, and will in the future. Her dam is a Steel Force out of Choppers grand dam "Rodrock Ms BLK Bear 31 N". Bottom line gave us a nice one here.

CE	10
BW	2.2
WW	65
YW	90
MCE	5
Milk	12
MWW	45
Marb	-0.07
REA	0.56
API	100



BF MISS VALARIE F170

SS SVF HONEY BUNZ



Sold in the 2012 Head of the Class sale for \$12,000 sold to Tingle Farms.

SS PRS GOTTON PUFF



Sold in the 2013 Head of the Class sale for \$11,250 sold to Sloup Simmentals.

BF MISS I AM GLAMOUR



Sold in the 2015 Head of the Class sale for \$29,000 sold to Shoal Creek Land & Cattle.



TRIR WLE ROXANNE F4091



WLE SOPHIE F748

Lot 40 TRIR WLE Roxanne F4091

Wesner Livestock

Purebred | 2/22/18 | 3425724 | F4091 | 72

Mr NLC Upgrade U8676
WLE/LWSC Revolution A409
 Shawnee Miss 770P
 WLE Uno Mas X549
TRIR Roxanne A4091
 WLE RoxanneY409

• Here is, in my opinion, a very unique purebred female that can stand all the competition that you wish to throw her way. Being a double bred 770P should only compliment her outrageous stoutness of hip and structural integrity, all wrapped in a good looking package.

CE 9
 BW 2
 WW 73
 YW 99
 MCE 2
 Milk 19
 MWW 56
 Marb 0.27
 REA 0.7
 API 137

Lot 41 WLE Sophie F748

Wesner Livestock

Purebred | 4/2/18 | 3440412 | F748 | 68

SVF Steel Force S701
WLE Big Deal A617
 Shawnee Miss 770P
 CNS Dream On L186
WLE Sophie A748
 WLE Sophie

• Those who have been in the Simmental business for awhile will definitely recall the "Sophie" cow family at WLE. That family has scattered high end Donor Cows and prolific herd sires into many well respected programs throughout the land. This female will captivate you with her stunning good looks and perfect skeleton combined with plenty of power and rib cage. Everyone loves a good looking red head! Enjoy!

CE 12
 BW 0.5
 WW 57
 YW 76
 MCE 6
 Milk 15
 MWW 44
 Marb 0.1
 REA 0.63
 API 120



BF MISS DREAMER BRU80

Lot 42 BF Miss Dreamer BRU80

BF Black Simmentals

SimAngus | 3/15/17 | 3265213 | E80 | 78

W/C BF Innocent Man
BF Mr Innocent Dreamer
Miss CCF Sheza Dreamer

BRU80

CE	11
BW	0.6
WW	50
YW	70
MCE	5
Milk	18
MWW	43
Marb	0.18
REA	0.49
API	99

- The Innocent Dreamer bull out of Innocent Man and CCF Sheza Dreamer makes a nice female. Our high selling open last year was an example. Here is another one! A half blood out of a Bruhn Angus cow and what a good bodied one. Another proud carrier of the SC Pay In Cash bull.

- Bred AI** SC Pay In Cash C15, ASA#2988789 on 5/15/18

Lot 43 BF Miss Innocent Star

BF Black Simmentals

Purebred | 3/1/17 | 3263328 | E92 | 70

W/C No Remorse 763Y
W/C BF Innocent Man
Miss Werning 174Y
CNS Dream On L186
HS Stop and Stare U118L
HHSF Black Glitter

CE	10
BW	1
WW	53
YW	73
MCE	5
Milk	24
MWW	51
Marb	0.13
REA	0.92
API	122

- The dam of this one as we say, needs no introduction! HS Stop and Stare U118 L has produced a multitude of quality ones for Hilbrands. Miss Innocent Stare has the look, the femininity, the quality and she's longer than the Song of the Whip-Poor-Will. She's bred for late January to Mr. CCF 20-20.

- Bred AI** Mr CCF 20-20, ASA#2964446 on 4/22/18



BF MISS INNOCENT STAR

Lot 44 BF Miss Pay In Cash

BF Black Simmentals



BF MISS PAY IN CASH

SimAngus | 4/2/17 | 3310782 | E419E | 76

CNS Pays To Dream T759
SC Pay In Cash C15
LLSF Urababydoll U194

419

CE	12
BW	0.5
WW	51
YW	72
MCE	6
Milk	16
MWW	42
Marb	0.21
REA	0.68
API	98

• Well here she is! The one and only bred in the sale out of the one and only "SC Pay In Cash C15", and what a knock out. Eye Candy piece of work she is, we think she would be valuable in any program, pure bred, club calf, or commercial. To start you off on the right path, we have her bred to the calving ease Mr. CCF 20-20 bull. A half blood deluxe with a 3/4 baby due early.

• **Bred AI** Mr CCF 20-20, ASA#2964446 on 4/23/18

Lot 45 SFIS/DDM Ella 80E

Speas Farms Inc.



SFIS DDM ELLA 80E

SimAngus | 2/25/17 | 3430937 | 80E | 82

BSAR Opportunity 9114
JSAR Black Rose
JSAR Miss Doctor 143AEL
Mr NLC Upgrade U8676
Sandeen Beauty 4080
EBS Shesa Beauty

CE	11
BW	1.2
WW	69
YW	102
MCE	6
Milk	21
MWW	55
Marb	0.23
REA	0.59
API	114

• Here is a JSAR Black Rose half blood daughter that will catch your eye, big middle with good structure and an impressive set of EPDs. Her mother Sandeen Beauty 4080 was purchased in the 2016 Building the Brand sale and hasn't disappointed since, predictable genetics here with many options on matings. Safe AI to the 2018 National Western Percentage Champion CDI Innovator. NO BULL EXPOSURE

• **Bred AI** CDI Innovator, ASA#3152448 on 4/16/18

Lot 46 Bramlets Black Star E702

Bramlet Simmentals



BRAMLETS BLACKSTAR E702

Purebred | 2/10/17 | 3394719 | E702 | 73

R&R Champerlain X744
JF Rancher 222Z
JF Ebony's Joy 734T
SVF/NJC Built Right N48
HPF Blackstar 233B
RCC Black Star U8111

CE	12
BW	2.3
WW	71
YW	104
MCE	5
Milk	24
MWW	60
Marb	-0.05
REA	0.8
API	124

• Here's a rancher daughter that stems back to the Black Star Family that has demanded much respect from many breeders across the states. We all know the potential of those Build Right decedents, E702 is no different. Bred to HPF Protest, an Empress 302Y son which was a high seller in the HPF Bull sale to the Willers Mitten Brand of Nebraska. The protest calves have big time potential.

• **Bred AI** HPF Protest, ASA#2945082 on 4/27/18



Lot 47 CNS/HFS Miss 189E

Schick Hafner Cattle Company

Purebred | 4/2/17 | 3437044 | 189E | 80

RGRS SRG Two Step 20Z ET
CNS-GVC Blackstar 511C

GVC Blackstar

RF Sleep Walker 88Z

Kershaws Baby Sis 189C

9Y

• This Blackstar daughter is an easy keeping, low maintenance type of female that stands on a big foot and good bone work. She is flat and angular in her makeup and has the structural integrity that will ensure longevity in the cowherd. An early February calf by the Paulsen/Udell sire Distinction should lead to quick return on investment.

• **Bred AI** Distinction 10C, ASA#3083878 on 5/1/18

CE 11
BW 1.9
WW 66
YW 94
MCE 5
Milk 17
MWW 50
Marb 0.11
REA 0.66
API 121

Lot 48 HTP/BRAM Tess D648

Bramlet & HTP Simmentals

3/4 Blood | 12/14/16 | 3437094 | D648 | 74

JF Milestone 999W
CLCC Cowboy In Me A34

PRS Auburn U8052

Legacy Bismark 1008

HTP/BRAM Tess A327

CDF Tess

• What an amazing baldy female here boys. D648 will be on your short list in September. Here is a female you can't put a whole in. She is the front pasture kind that we all love. She may not be out of a big time AI stud, but you study her heritage there are multiple contributors to the breed.

• **Bred AI** CDI Innovator 325D, ASA#3152448 on 3/28/18

CE 12
BW 1.4
WW 68
YW 102
MCE 6
Milk 24
MWW 58
Marb 0.13
REA 0.72
API 119



HTP/BRAM TESS D648



SS/SVF LYNETTE 420Y



WLE LYNETTE F420 - LOT 48A



WLE COPACETIC E02 - REFERENCE AI SIRE



WLE DEW THE STROKE E39

Lot 49 SS/SVF Lynette 420Y

Wesner Livestock

3/4 Blood | 2/26/11 | 2588385 | 420Y | 76

CNS Dream On L186	CE	14
SVF/NJC Built Right N48	BW	0.5
NJC Ebony Antoinette	WW	62
	YW	85
CNS Dream On L186	MCE	6
CRCC Lynette 4209P	Milk	17
OCC Miss Emblazon 522J	MWW	48
	Marb	0.14
	REA	0.43
	API	130

• Here is a pair of cattle that we would love to keep and when you see them you will know why. 420Y was our selection from the Head of the Class as our pick of the open heifers that year. We couldn't be more pleased with the production of this female and some of them are part of some serious programs around the country. This highly flexible, good looking, big bellied baldy female is carrying the service of our up and coming phenomenon herd sire WLE Copacetic E02 to provide immediate return on your investment. This little star faced lacy at her side will spin your head with her stunning look and impeccable build. She's ready for a show halter! Enjoy!

• **Bred AI** WLE Copacetic E02, ASA#3299037 on 6/24/18

49A WLE Lynette F420 | 5/18/18 | 3440643 | F420 | 64
| Heifer | CMFM Caught Lookin D929, ASA#3235224

Lot 50 WLE Dew The Stroke E39

Wesner Livestock

Purebred | 2/12/17 | 3440644 | E39 | 76

HTP/SVF Duracell T52	CE	12
HPF Quantum Leap Z952	BW	1.1
RP/MP Right To Love 015U	WW	77
	YW	117
W/C United 956Y	MCE	6
CMFM Dew T Stroke 39ZB	Milk	18
CMFM Dew The Stroke	MWW	57
	Marb	0.13
	REA	0.89
	API	130

• The Quantum Leap cattle are making their mark throughout the beef business for being that easy keeping, sound structured kind that will last a long time. This female is no exception with tons of dimension and the glide in her stride. She will certainly command your consideration. The Dew The Stroke cow family becomes an added feature. Bred 4/8/18 WLE Genuine E020 (Pays to Believe x 770P)

• **Bred AI** WLE Genuine E020, ASA#3440408 on 4/8/18



GSC GCCO DEW NORTH 102C

Lot 51A
51B
51C
51D
51E

GSC GCCO Dew North 102C

Lydeon Cattle Co

Purebred Semen | 9/10/15 | 3141837

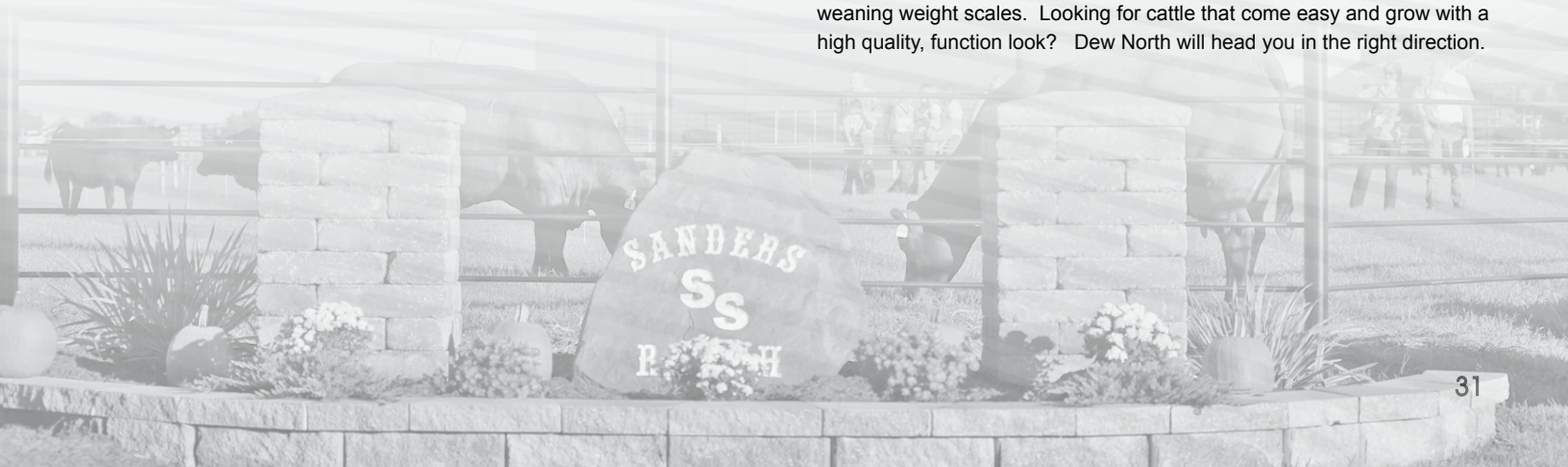
CNS Dream On L186
HTP/SVF Duracell T52
HTP SVF Honeydew
Welshs Dew It Right 067T
Welsh's Scarlet 161Z
Welshs Roxie 103W

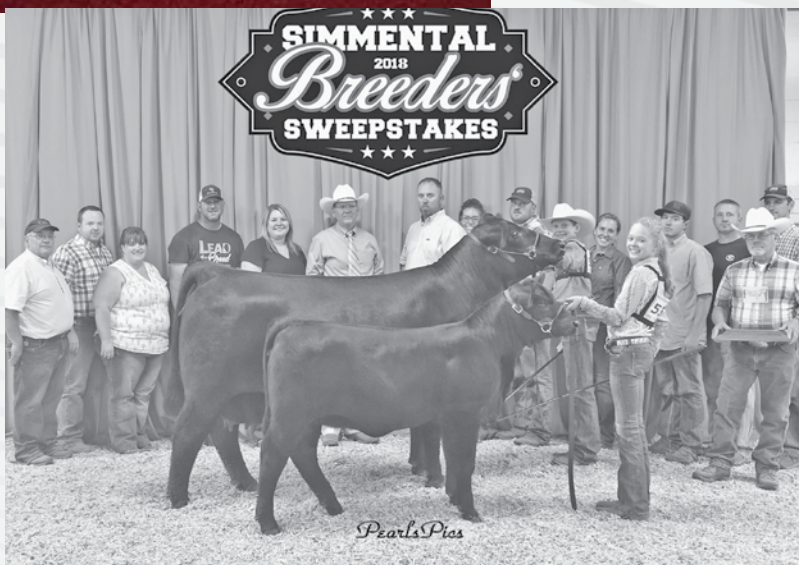
- Selling 5 lots of 10 up to 50 Units.
- ASA Bolt EPDS Aug 14, 2018

CE	10
BW	0.7
WW	70
YW	95
MCE	4
Milk	11
MWW	47
Marb	-0.18
REA	1.16
API	109

• When the opportunity came to purchase the Glacier Cattle herd in Wisconsin and move the cattle to Missouri, we jumped at the chance. Lydeon Land and Cattle is very excited and grateful to the Head of the Class to join in the offering. Due to the logistical challenges of moving the herd and getting pictures and cattle ready for the Head of the Class Sale, we thought it would be excellent to offer some of the Fort Worth National Champion Bull, GSC GCCO Dew North 102C mating from the donor cows that are moving to Myrtle, Missouri. Homozygous polled and black.

• Dew North 102C, is the functional, sound structured sire that made the true cow people notice him at NAILE, National Western and Fort Worth. The calves on the ground of this balanced EPD sire, are clean fronted, square built cattle with body and volume. Dew North is a bull that gained several fans over the course of this past show season. His functional build and genetic profile makes him a sire of choice for several cattle people. After winning Fort Worth, John Griswold purchased half interest in Dew North and added him to his impressive bull battery. The calves that hit the ground this spring came unassisted to first calf heifers and have been square built high quality calves that certainly do not disappoint at the weaning weight scales. Looking for cattle that come easy and grow with a high quality, function look? Dew North will head you in the right direction.





HTP BRAM MS 457 C504

Sold in the 2015 Head of the Class sale to the Gilbert Family of IL. At the recent Simmental Breeders Sweepstakes, C504 was named Champion Cow/calf pair and went on to be slapped the Knic Overpeck Supreme Champion Overall.

I would like to THANK YOU
for your interest
and participation in the
Head of the Class over the
last 16 years.
Together we can keep the
Simmental
breed STRONG!

I always say....
"Formal education will
make you money
BUT,
Self education will make
you wealthy!"



Sale Day Phones:

Sanders Ranch Office	913.377.2200
Auction Block	913.377.2208

Accommodations:**Holiday Inn Express**

7580 W. 135th Street, Overland Park, KS 66223	913.681.8400
---	--------------

Courtyard Marriott

11301 Metcalf Ave, Overland Park, KS 66210	913.339.9900
--	--------------

Paola Inn & Suites

1600 Hedge Ln Ct, Paola, KS 66071	913.294.3700
-----------------------------------	--------------

Rutlander RV Park,

33565 Metcalf Rd, Louisburg, KS 66053	866.888.6779
---------------------------------------	--------------

Airport:

Kansas City International Airport (MCI) served by most major airlines. Airport is located 60 miles from sale facility.

Sale Consultants:

DP Sales Management, LLC

Doug Parke	859.421.6100
------------	--------------

Drew Hatmaker	423.506.8844
---------------	--------------

Buddy Robertson	580.747.7000
-----------------	--------------

Sale Staff:

Jered Shipman, Auctioneer	806.983.7226
---------------------------	--------------

JW Brune, Midwest Marketer	785.594.6650
----------------------------	--------------

Tom Rooney, Midwest Marketer	515.491.6025
------------------------------	--------------

Shane Ryan, special assignment	309.371.7490
--------------------------------	--------------

Trucking:

Sam Harroun	319.325.9389
-------------	--------------

Mark Howard	931.510.9147
-------------	--------------

Insurance:

Insurance will be available sale day through Jame Secondino, American Livestock, 812.208.0956

Sale Manager:

Doug & Debbie Parke • 859.421.6100

Drew & Holli Hatmaker • 423.506.8844

153 Bourbon Hills • Paris, KY 40361

859.987.5758 • office@dpsalesllc.com

www.dpsalesllc.com



Head of the Class

September 22nd, 2018 | 1:00 pm

Sanders Ranch Sale Facility

4255 W 335th St | Louisburg, KS 66053

Special Guests:

American Simmental Assoc. Trustees

Randy Moody, & John Irvine

Micheal Dikeman, President of Kansas Simmental Assoc.

JR Richburg, President of Missouri Simmental Assoc.

Announcements:

A supplement sheet will be available sale day with updated information, catalog corrections, or any additional information. This information and any information relayed over the auction block during the sale will take precedence over printed material for the sale. Anyone attending the sale does so at their own risk. DP Sales Management, sale hosts, and/or consignors will not be held responsible for any personal injury incurred at the event. DP Sales Management is only an agent for the seller and has no responsibilities other than those conducting the sale.

Sale Registration & Payment:

All buyer numbers will only be issued with a valid ID and payment is due day of sale. DP Sales Management, LLC would appreciate timely settlement of receivables within 15 days of date of sale. Cattle will not be transferred until paid for in full.

Notes:

The EPDs reported in this catalog are the Fall 2018 numbers, as reported by the American Simmental Association.

Terms & Conditions:

All cattle sell under the terms and conditions of the American Simmental Association. Cattle become the responsibility of the buyer upon purchase. Terms of sale are cash or check, payable during or immediately after the sale and before cattle will be released. Payments are to be made within 15 days of the sale. Failure to make settlement in a timely manner will result in prosecution. Cattle will not be transferred until paid in full.



The Class of 2018 Sale Schedule

Friday, September 21, 2018

12:00 Noon	Viewing of cattle all afternoon
6:00 pm	Pre-Sale Social at Sanders Ranch

Saturday, September 22, 2018

8:00 am	Viewing of sale cattle
11:00 am	Complementary lunch
1:00 pm	16 th Annual Head of the Class Sale



Doug & Debbie Parke
153 Bourbon Hills • Paris, KY 40361
(859) 987-5758 • (859) 987-0709 fax
(859) 421-6100 mobile • office@dpsalesllc.com
www.dpsalesllc.com

Presorted
First Class
US Postage
PAID
SlateGroup

Dated Material

First Class

